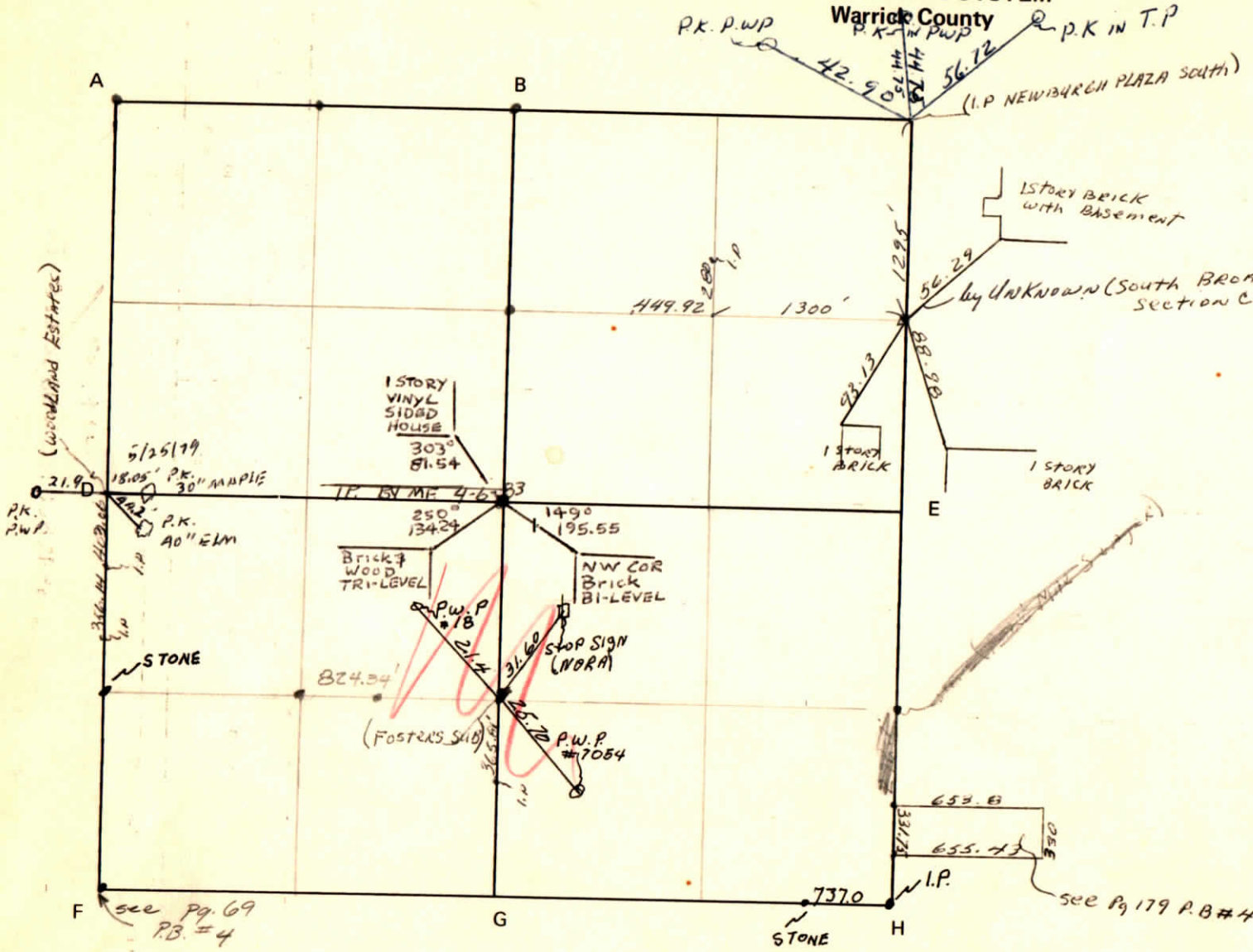


CORNER CODE SYSTEM

Warrick County



NOTES

(I.P. NEWBARCH PLAZA SOUTH)

by UNKNOWN (SOUTH BROADVIEW SECTION C)

see Pg 179 P.B #4

see Pg 69 P.B #4

(Woodland Estates)

(FOSTER'S SUB)

STOP SIGN (NORA)

1 STORY BRICK WITH BASEMENT

1 STORY BRICK

1 STORY BRICK

STONE

STONE

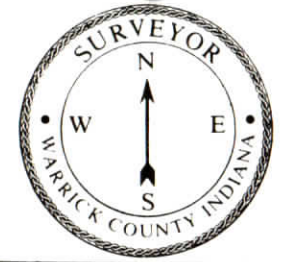
RECORD OF SECTION CORNERS

Warrick County

Section 34 Township 6 South Range 9 West 2nd Principle Meridian

Date	Cor	Description of		Distance from Corner	Azimuth from Corner (North Assumed)	Cond	Check By	Remarks
		Monument	Reference					
6/5/73	A	iron pin	1) stop sigh (Nora)	31.6				SWC Intersections SR261&Sharon Rd. NWcor.SW1/4 SE1/4
	B		2) PWP #7054	25.7				
			3) PWP #18	21.4				
5/29/73	C	iron pin	1) pkpwp	42.90				Sam Biggerstaff Newburgh Plaza S.
	D		2) pk pwp	44.75				
			3) pk pwp	56.72				
	E							
	F							
	G							
	H							
	I							

CORNER RECORD
WARRICK COUNTY



DESCRIPTION :

NE CORNER NE¹/₄ NE¹/₄

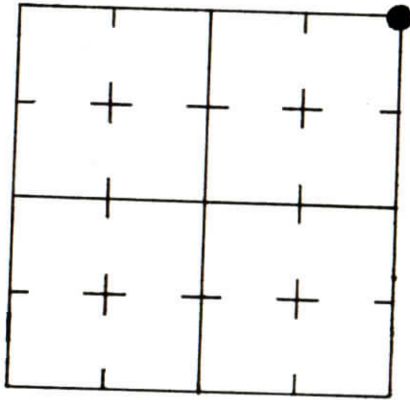
SECTION 34, T. 6 S.

R. 9 W.

2nd PRINCIPLE MERIDIAN

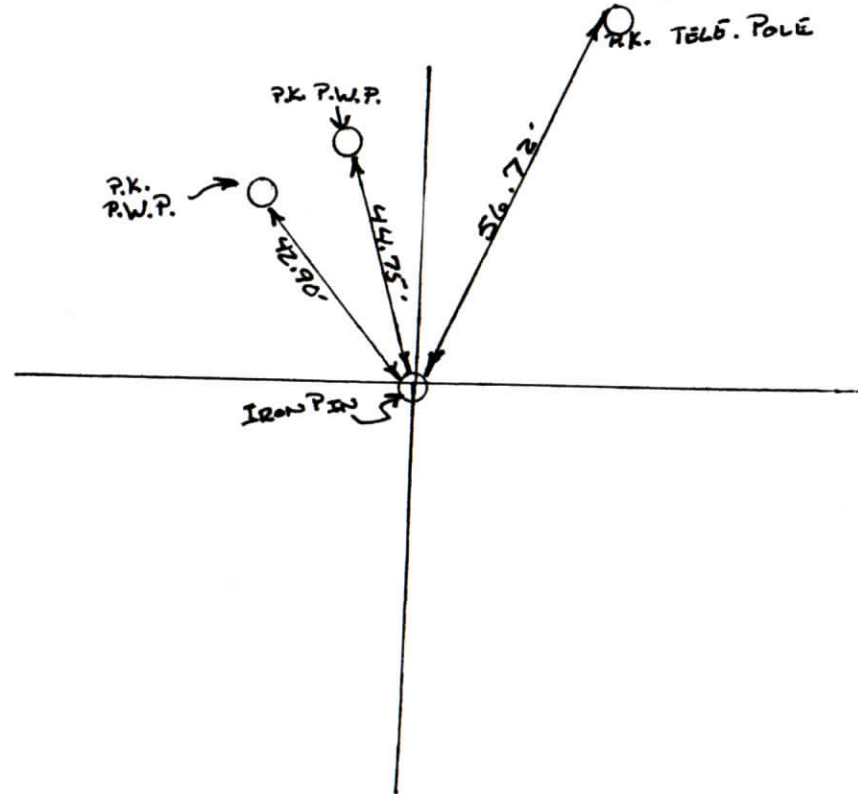
WARRICK COUNTY SURVEYOR
KARAN HARGRAVE-BARNHILL

INDICATE CORNER REFERENCED



DESCRIBE CORNER REFERENCED

NEWBURGH PLAZA SOUTH



STATE PLANE COORDINATE DATA

INDIANA ZONE: WEST

X _____

Y _____

ESTABLISHED BY:

APPROVED BY

DATE

REFERENCED BY:

DATE

SAM BIGGERSTAFF

5-29-73

CORNER RECORD
WARRICK COUNTY

DESCRIPTION :

NE CORNER SE 1/4 NE 1/4

SECTION 34, T. 6 S. R. 9 W.

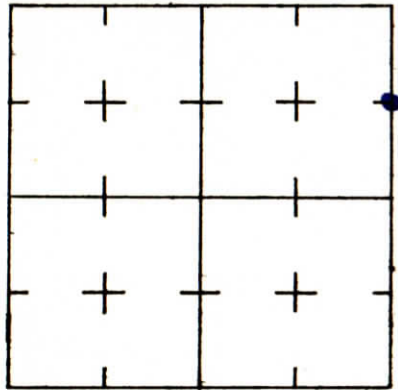
2nd PRINCIPLE MERIDIAN

South Broadview #4 #258

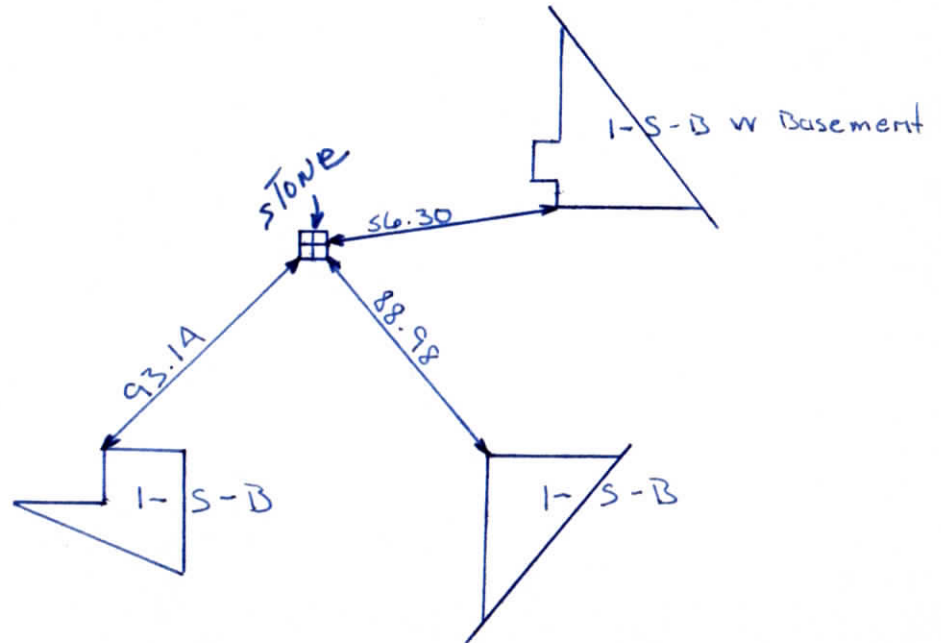
WARRICK COUNTY SURVEYOR
MICHAEL IRVIN



INDICATE CORNER REFERENCED



DESCRIBE CORNER REFERENCED



STATE PLANE COORDINATE DATA

INDIANA ZONE: WEST

X _____

Y _____

ESTABLISHED BY:

APPROVED BY

DATE

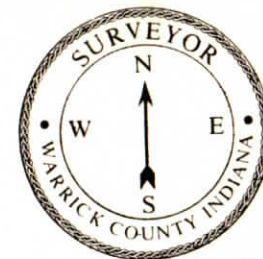
REFERENCED BY:

DATE

Elmo D Dockery

June 8, 1977

CORNER RECORD
WARRICK COUNTY



DESCRIPTION:

NE CORNER SE 1/4

SECTION 34, T. 6 S. R. 9 W.

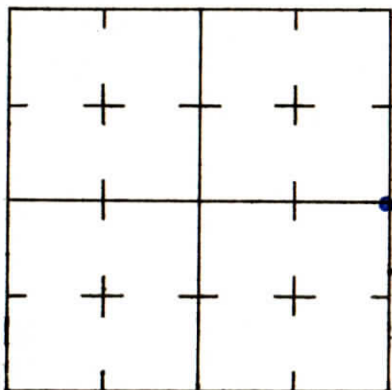
2nd PRINCIPLE MERIDIAN

South Broadview Estates.

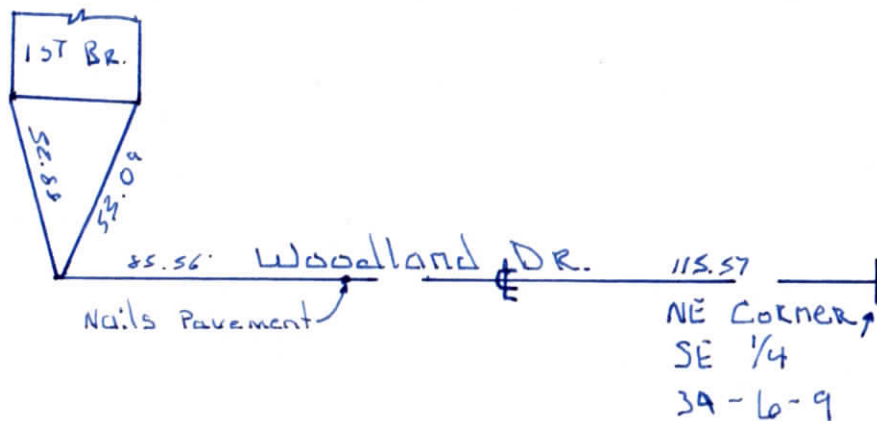
WARRICK COUNTY SURVEYOR

MICHAEL IRVIN

INDICATE CORNER REFERENCED



DESCRIBE CORNER REFERENCED



STATE PLANE COORDINATE DATA

INDIANA ZONE: WEST

X _____

Y _____

ESTABLISHED BY:

APPROVED BY

DATE

REFERENCED BY:

DATE

Elmo D Docker

MAY 12, 1982

CORNER RECORD
WARRICK COUNTY



DESCRIPTION:

NE CORNER SE 1/4

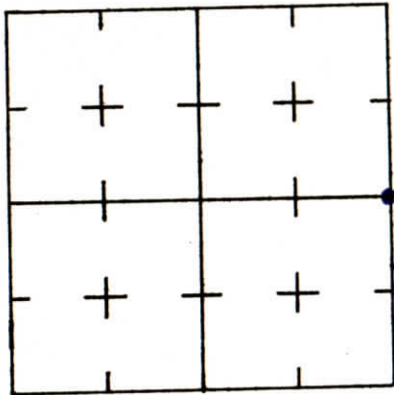
SECTION 34, T. 6 S. R. 9 W.

2nd PRINCIPLE MERIDIAN

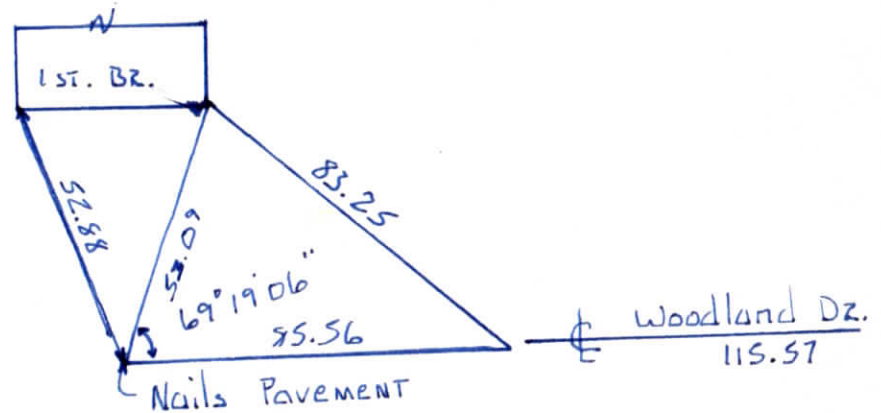
South Broadview Estates No. 2

WARRICK COUNTY SURVEYOR
MICHAEL IRVIN

INDICATE CORNER REFERENCED



DESCRIBE CORNER REFERENCED



STATE PLANE COORDINATE DATA

INDIANA ZONE: WEST

X _____

Y _____

ESTABLISHED BY:

APPROVED BY

DATE

REFERENCED BY:

DATE

Elmo D Dockery

Oct 10, 1984

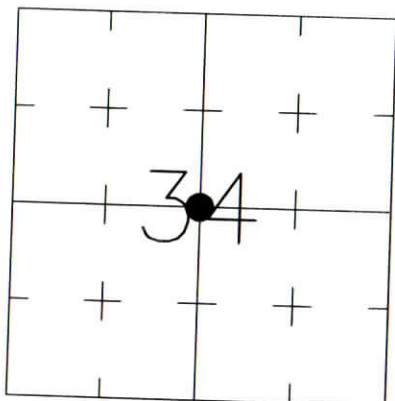
CORNER RECORD
WARRICK COUNTY



DESCRIPTION:
SOUTHWEST CORNER NORTHEAST QUARTER
SECTION 34, T. 6 S., R. 9 W.
2nd PRINCIPLE MERIDIAN

WARRICK COUNTY SURVEYOR
KARAN HARGRAVE-BARNHILL

INDICATE CORNER REFERENCED:



T6S
T7S

MONUMENT TYPE: IRON ROD IN CONC.
SIZE: 3/4" DIA.
DEPTH/HEIGHT: FLUSH
REFERENCE TIE DRAWING:

FOR NOTES ON CORNER HISTORY SEE REVERSE.

STATE PLANE COORDINATE DATA:
INDIANA WEST ZONE, NAD 83 (1997)
U.S. SURVEY FEET

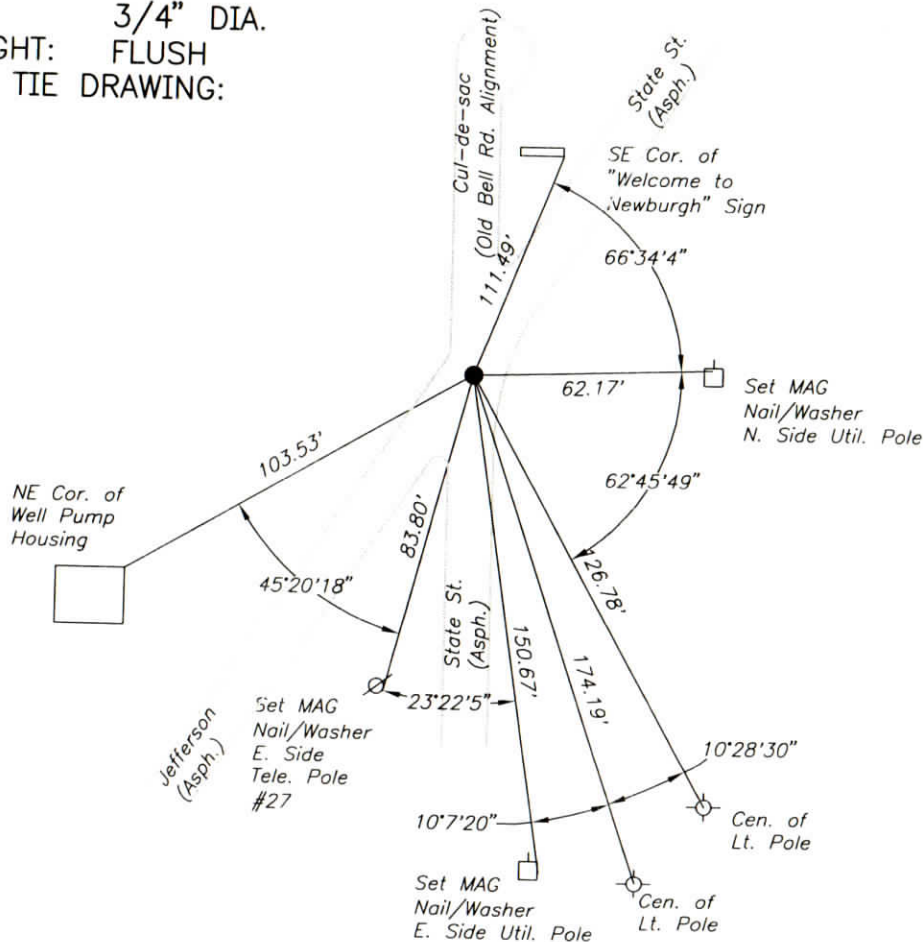
X ---

Y ---

COORDINATES ESTABLISHED BY:

APPROVED BY:

DATE:



REFERENCED BY: D.DREES/C.BINKLEY

DATE: 8/27/02

APPROVED BY: P.JONES, RLS#9600016

DATE: 8/29/02

CORNER FILE CODE:
T6S-R9W-X-15

CORNER HISTORY:

CORNER FILE CODE:
T6S-R9W-X-15

ORIGINAL USPLS SURVEY: (Center of Section not monumented by USPLS Survey).

COUNTY SURVEYOR'S BOOKS: Book 1 P. 57: W.B. Wright WCS Nov. 1, 1855 "Stone".

Book 3 P. 112: Geo. E. Stevenson, C.E. May 15, 1939 "Stone" (also Stone 860.64' E, IP 253.0' S, IP 759.14' S, IP 1062.82' S).

OTHER SURVEYS AND PLATS: "Corner Code System" card shows reference to "IP by M.F. 4-6-83".

A found 1" O.D. iron pipe was tied in and referenced on the Bell Road Route Survey (Bernardin-Lochmueller & Assoc. 1989, unrecorded). This corner was later re-monumented during the reconstruction of Bell Road, under the inspection of Alvin L. Paul, RLS.

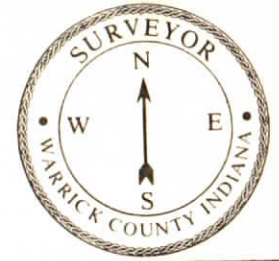
VERIFICATION OF CORNER POSITION: August, 2002: The 3/4" iron rod in concrete placed during the Bell Road reconstruction project was found in place, its position consistent with reference ties taken during the Bell Road survey in 1989.
Perry E. Jones 8/29/02

CORNER RECORD
WARRICK COUNTY

DESCRIPTION :

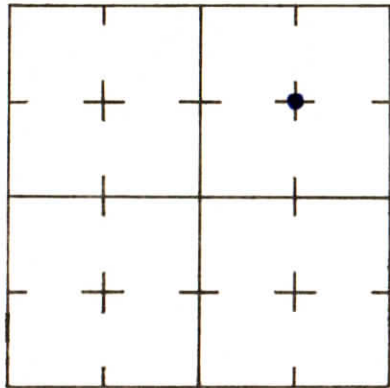
SE CORNER NE¹/₄ NE¹/₄
SECTION 39, T. 6 S. R. 9 W.
2nd PRINCIPLE MERIDIAN

WARRICK COUNTY SURVEYOR
MICHAEL IRVIN

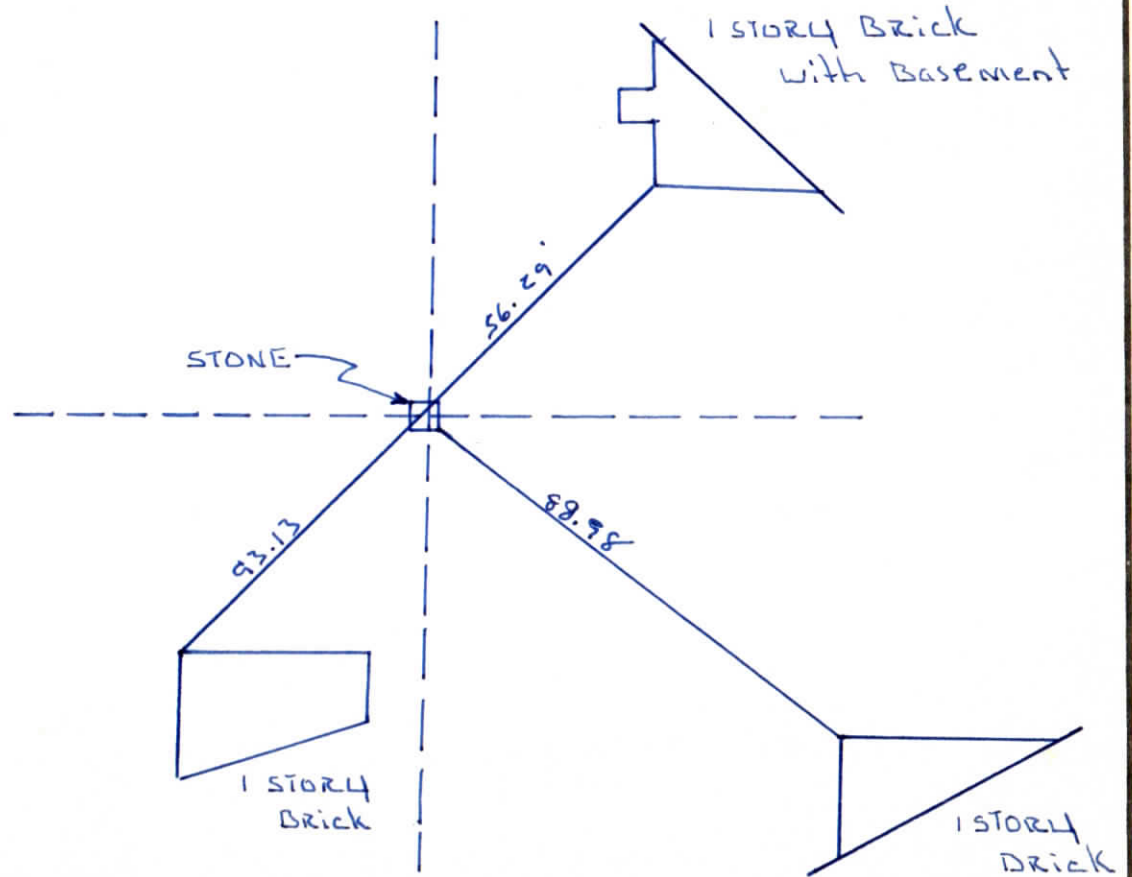


South Broadview Sec "C"

INDICATE CORNER REFERENCED



DESCRIBE CORNER REFERENCED



STATE PLANE COORDINATE DATA

INDIANA ZONE: WEST

X _____

Y _____

ESTABLISHED BY:

APPROVED BY

DATE

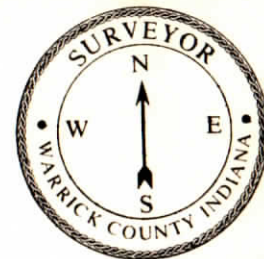
REFERENCED BY:

DATE

EMC D Doctery

Feb 8, 1977

CORNER RECORD
WARRICK COUNTY



DESCRIPTION:

NE CORNER SE¹/₄ SW¹/₄

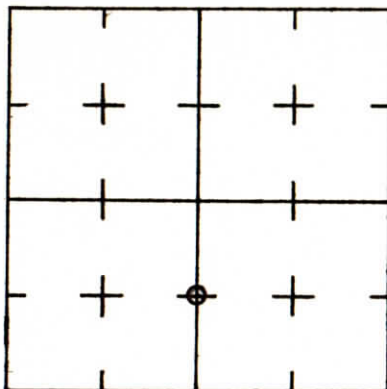
SECTION 34, T. 6 S. R. 9 W.

2nd PRINCIPLE MERIDIAN

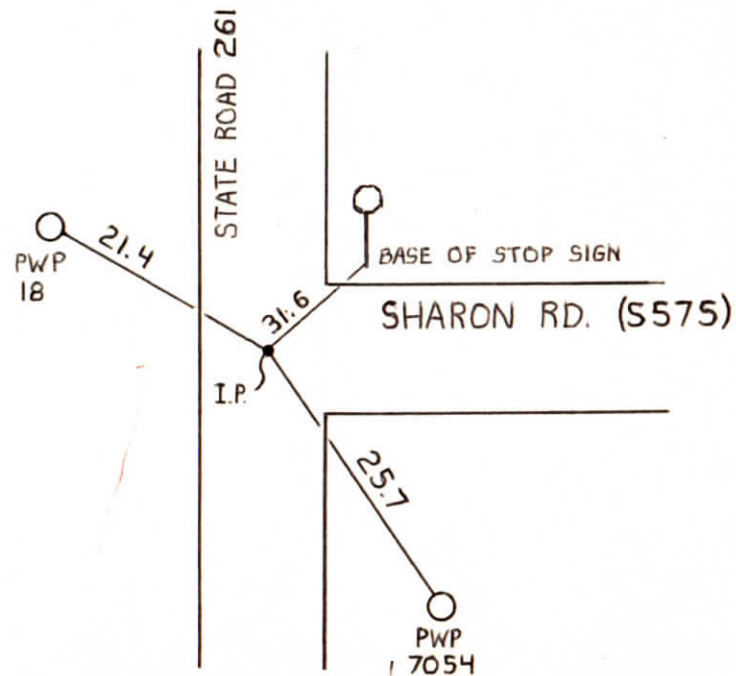
WARRICK COUNTY SURVEYOR

MICHAEL IRVIN

INDICATE CORNER REFERENCED



DESCRIBE CORNER REFERENCED



STATE PLANE COORDINATE DATA

INDIANA ZONE: WEST

X _____

Y _____

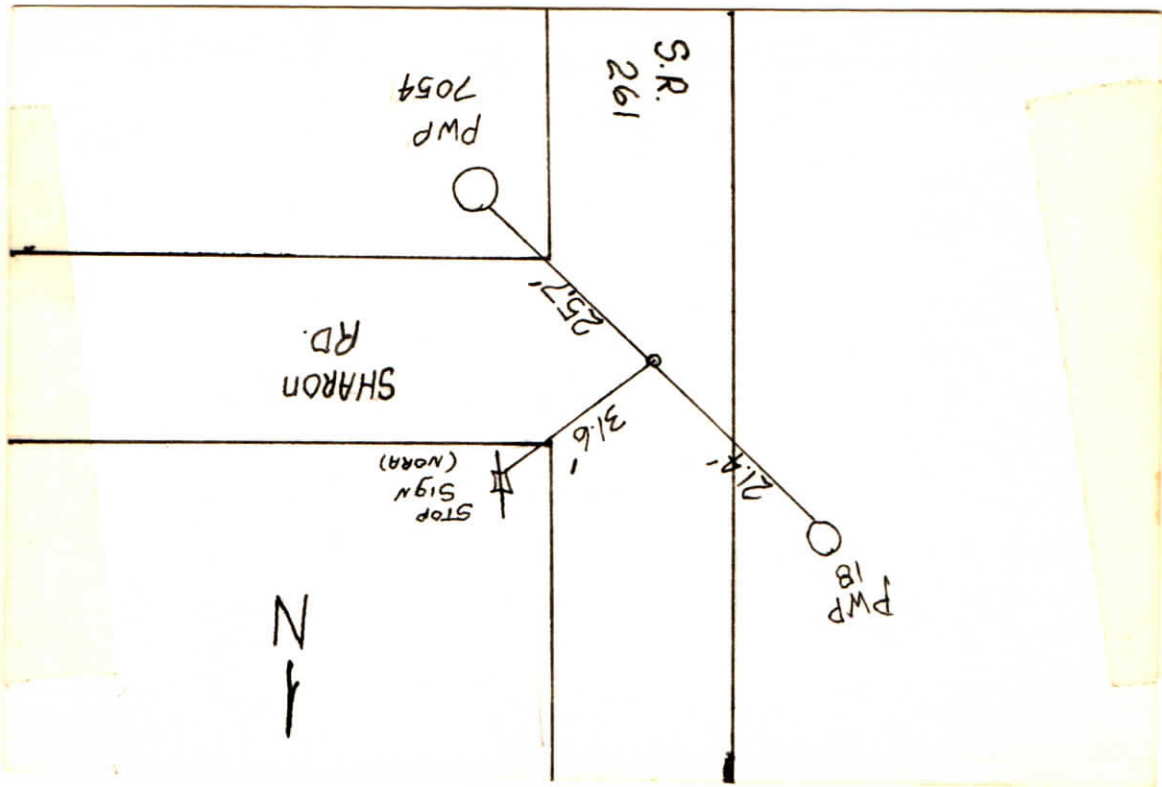
ESTABLISHED BY:

APPROVED BY _____
NOT VERIFIED

DATE
6/6/73

REFERENCED BY:

DATE



000019

~~NE corner SE $\frac{1}{4}$ SW $\frac{1}{4}$ DUPLICATE~~
~~NW corner SW $\frac{1}{4}$ SE $\frac{1}{4}$~~
~~SE corner NE $\frac{1}{4}$ SW $\frac{1}{4}$~~
~~SW corner NW $\frac{1}{4}$ SE $\frac{1}{4}$ sec. 34-65-9w~~

Type of Monument: I.P. (existing)

Date referenced: 6/6/73

referenced by: SWC

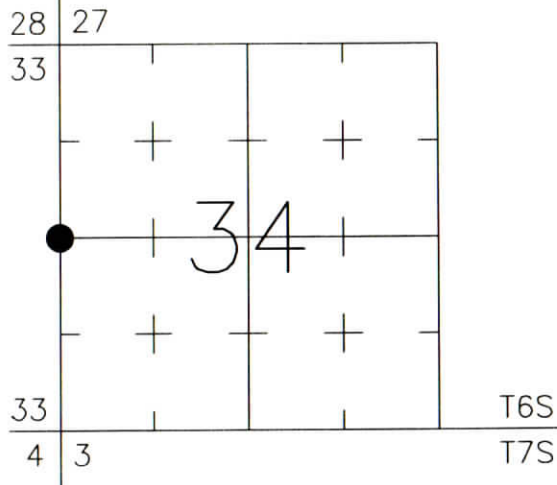
CORNER RECORD WARRICK COUNTY



DESCRIPTION:
SOUTHWEST CORNER NORTHWEST QUARTER
SECTION 34, T. 6 S., R. 9 W.
2nd PRINCIPLE MERIDIAN

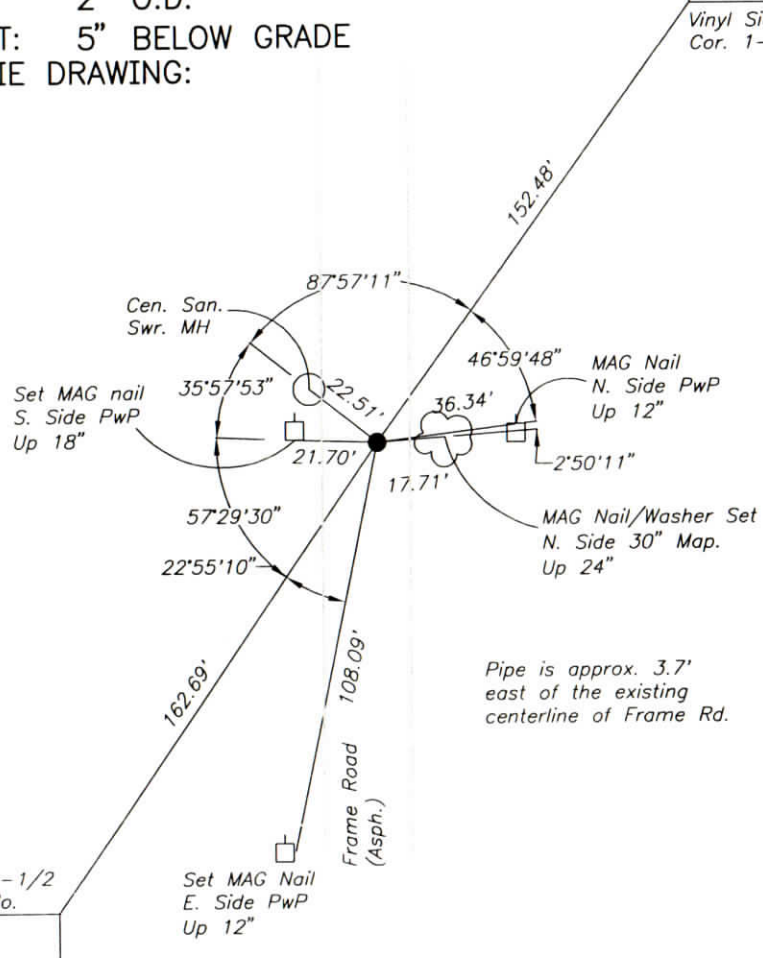
WARRICK COUNTY SURVEYOR
KARAN HARGRAVE-BARNHILL

INDICATE CORNER REFERENCED:



MONUMENT TYPE: IRON PIPE
SIZE: 2" O.D.
DEPTH/HEIGHT: 5" BELOW GRADE
REFERENCE TIE DRAWING:

FOR NOTES ON CORNER HISTORY SEE REVERSE.



STATE PLANE COORDINATE DATA:
INDIANA WEST ZONE, NAD 83 (1997)
U.S. SURVEY FEET

X ----

Y ----

COORDINATES ESTABLISHED BY:

APPROVED BY:

DATE:

REFERENCED BY: D.DREES/C.BINKLEY

APPROVED BY: P.JONES, RLS#9600016

DATE: 8/27/02

DATE: 8/28/02

CORNER FILE CODE:
T6S-R9W-X-13

CORNER HISTORY:

CORNER FILE CODE:
T6S-R9W-X-13

ORIGINAL USPLS SURVEY: Corner established by Jacob Fowler, Dec. 18, 1805 "Post".

COUNTY SURVEYOR'S BOOKS: Book 3 P. 141: Louis Meyer WCS Nov. 10, 1909 "Old Corner".

OTHER SURVEYS AND PLATS: "Corner Record" cards show references to a 1" iron pipe as taken from the 1980 plat of Knob Hill Mobile Home Park and the 1984 plat of Maple North Subdivision.

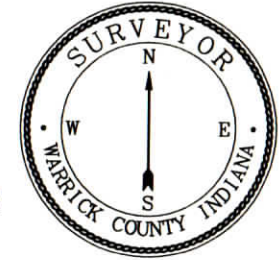
A found 2" O.D. iron pipe 4" below grade was tied in on the Bell Road Route Survey (Bernardin-Lochmueller & Assoc. 1989, unrecorded).

An Exempt Division by Danny K. Leek (Doc. 1996R-011935) shows a 2" iron pipe found.

VERIFICATION OF CORNER POSITION: The 2" O.D. iron pipe was found in place. Distances to a power pole and a maple tree were reasonably consistent with the "Corner Record" card reference ties from the 1980's.

Perry E. Jones 8/28/02

CORNER RECORD WARRICK COUNTY

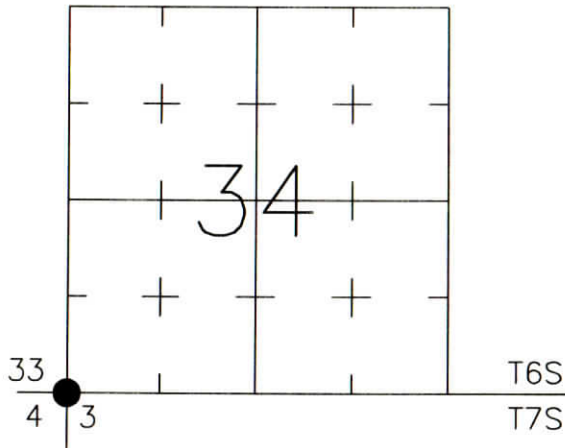


DESCRIPTION:

SOUTHWEST CORNER _____
SECTION 34, T. 6 S., R. 9 W.
2nd PRINCIPAL MERIDIAN

WARRICK COUNTY SURVEYOR
KARAN HARGRAVE-BARNHILL

INDICATE CORNER REFERENCED:



MONUMENT TYPE: NO MON. (WITNESS POINT)

FOR NOTES ON CORNER HISTORY SEE REVERSE.

SIZE:
DEPTH/HEIGHT:
REFERENCE TIE DRAWING:

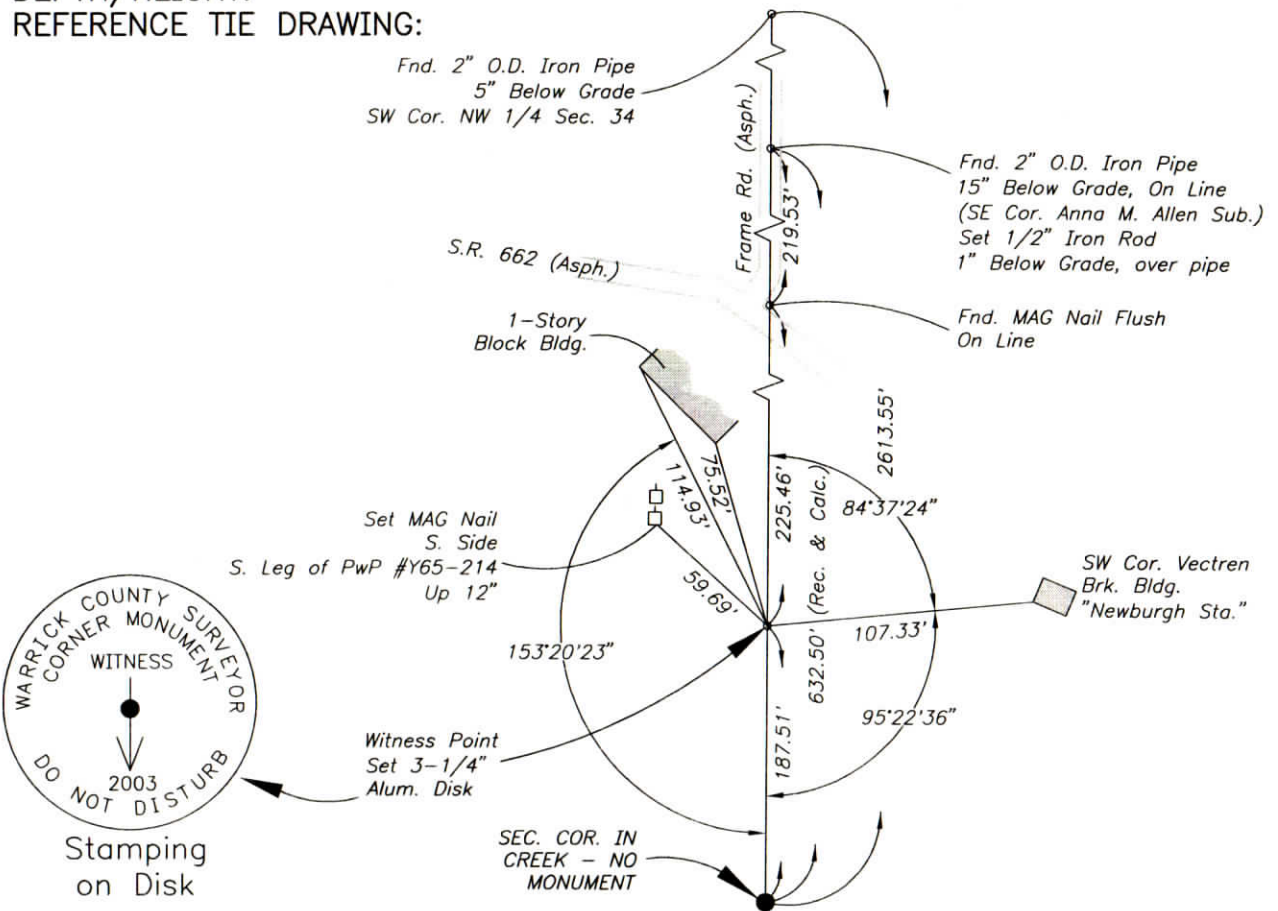
STATE PLANE COORDINATE DATA:
INDIANA WEST ZONE, NAD 83 (1997)
U.S. SURVEY FEET

X _____
Y _____

COORDINATES ESTABLISHED BY:

APPROVED BY:

DATE:



REFERENCED BY: D.DREES/K.DILGER

DATE: 6/2/03

APPROVED BY: P.JONES, RLS#9600016

DATE: 7/30/03

CORNER FILE CODE:
T6S-R9W-Z-13

CORNER HISTORY:

CORNER FILE CODE:
T6S-R9W-Z-15

ORIGINAL USPLS SURVEY: Corner established by Jacob Fowler, Dec. 14, 1805 "Post".

COUNTY SURVEYOR'S BOOKS: Book 1 P. 13: Chester Elliott WCS July 15, 1851 "Stone Cor. 41-1/2 Links E. of the N-S Centerline, Stone Cor. 36 Links W. of the N-S Centerline".

OTHER SURVEYS AND PLATS: No Co. Surv. references, no recorded surveys/subdivisions found.

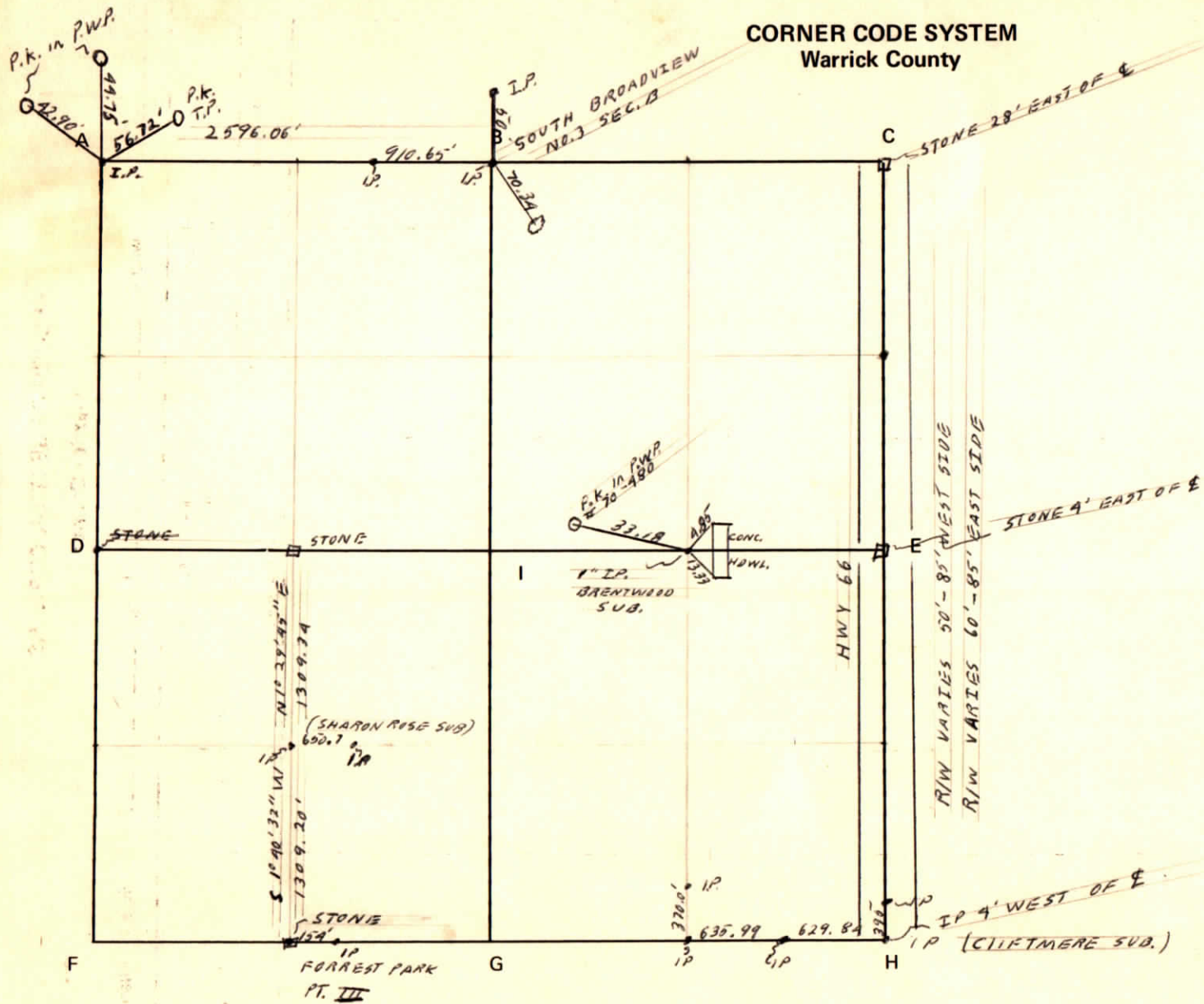
Subdivision plats for Phelps Enlargement (Plat Book 1, page 6), Dickerson's Enlargement (P.B. 1, p. 37), and Gray's Enlargement (P.B. 1, P. 36) do not show the corner but suggest that the south line of Phelps and Dickerson's Enlargements follow the section line, and that the corner falls in the center of platted State Street.

VERIFICATION OF CORNER POSITION: March, 2003: Ties were made to lot corner monuments in Phelps, Dickerson's, and Gray's Enlargements. The corner position was re-established using monuments found on the south line of Dickerson's Enlargement, and projecting this line westward to intersect a 25' offset from monuments found on the eastern boundary of State Street (center of 50' platted street). There is an uncertainty in this position of approximately 3' north-south and 1' east-west based on comparisons to monuments in Phelps Enlargement. The monuments in Phelps Enlargement were not used due to the lack of consistent monumentation along the south side of the Enlargement and known discrepancies along this line. October 30, 2003: the aluminum disk in monument box shown was set in place at the re-established location.

Perry E. Jones 10/31/03

CORNER CODE SYSTEM
Warrick County

NOTES



RECORD OF SECTION CORNERS

Warrick County

Section _____ Township _____ Range _____ 2nd Principle Meridian

Date	Cor	Description of		Distance from Corner	Azimuth from Corner (North Assumed)	Cond	Check By	Remarks
		Monument	Reference					
	A							
	B							
	C							
	D							
	E							
	F							
	G							
	H							
	I							

CORNER RECORD
WARRICK COUNTY



DESCRIPTION :

NW CORNER NW 1/4

SECTION 35, T. 6 S. R. 9 W.

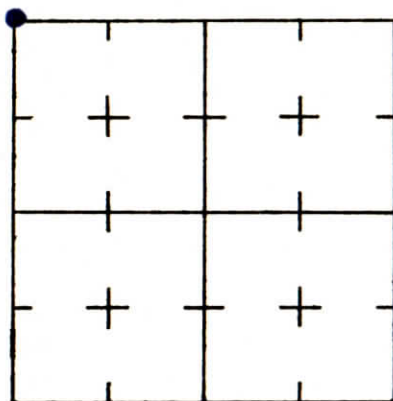
2nd PRINCIPLE MERIDIAN

South Brandview Sub sec "B"

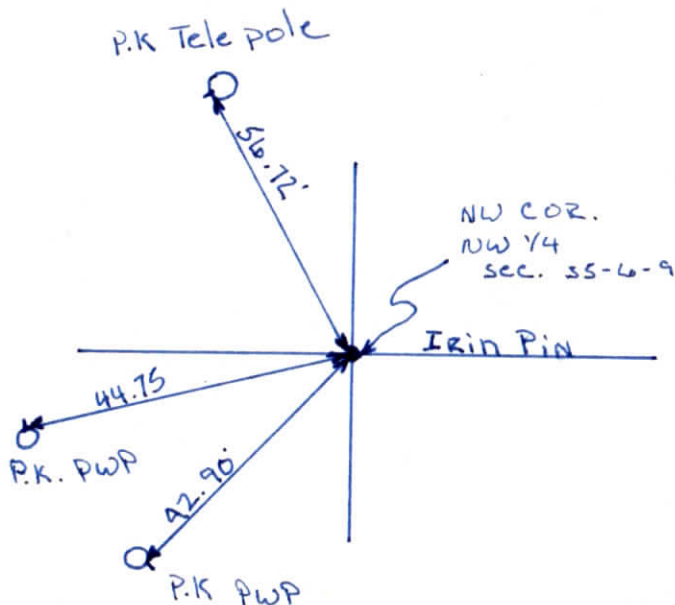
WARRICK COUNTY SURVEYOR

MICHAEL IRVIN

INDICATE CORNER REFERENCED



DESCRIBE CORNER REFERENCED



STATE PLANE COORDINATE DATA

INDIANA ZONE: WEST

X _____

Y _____

ESTABLISHED BY:

APPROVED BY

DATE

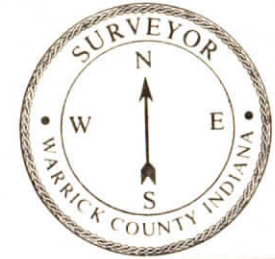
REFERENCED BY:

DATE

Elmo D Dockery

Feb 8 1977

CORNER RECORD
WARRICK COUNTY



DESCRIPTION:

NW CORNER NW 1/4

SECTION 35, T. 6 S. R. 9 W.

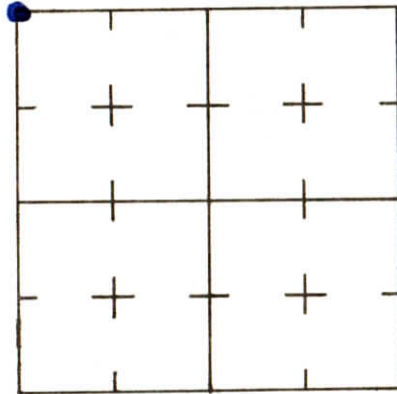
2nd PRINCIPLE MERIDIAN

WARRICK COUNTY SURVEYOR

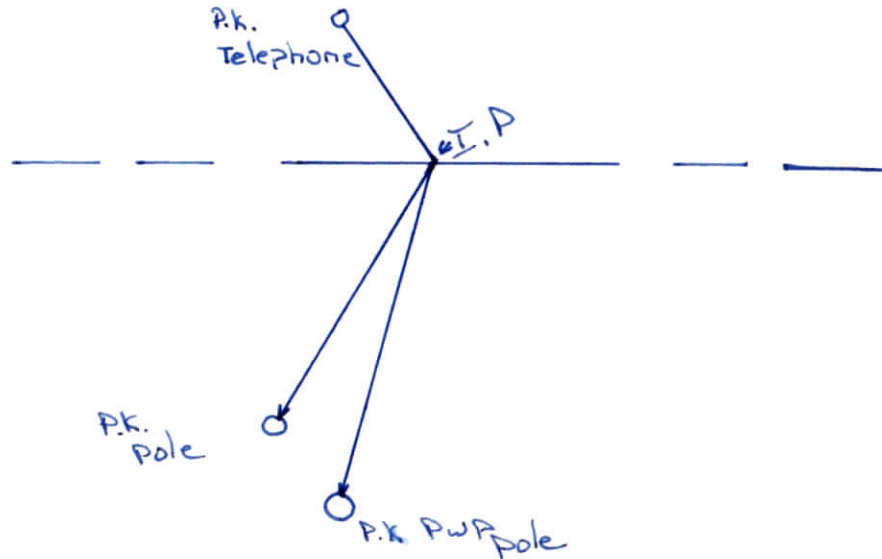
MICHAEL IRVIN

South Broadview No. 2 "SEC" B # 227

INDICATE CORNER REFERENCED



DESCRIBE CORNER REFERENCED



STATE PLANE COORDINATE DATA

INDIANA ZONE: WEST

X _____

Y _____

ESTABLISHED BY:

APPROVED BY

DATE

REFERENCED BY:

DATE

Elmo D Dockey

March 10, 1976

CORNER RECORD
WARRICK COUNTY



DESCRIPTION:

NW CORNER NW/4

SECTION 35, T. 6 S. R. 9 W.

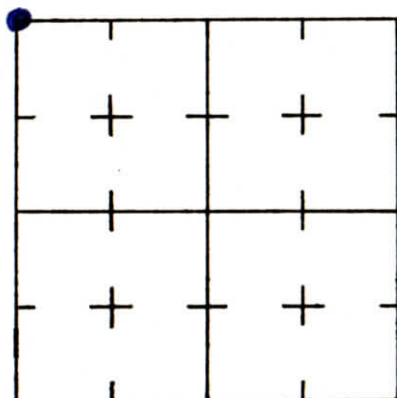
2nd PRINCIPLE MERIDIAN

WARRICK COUNTY SURVEYOR

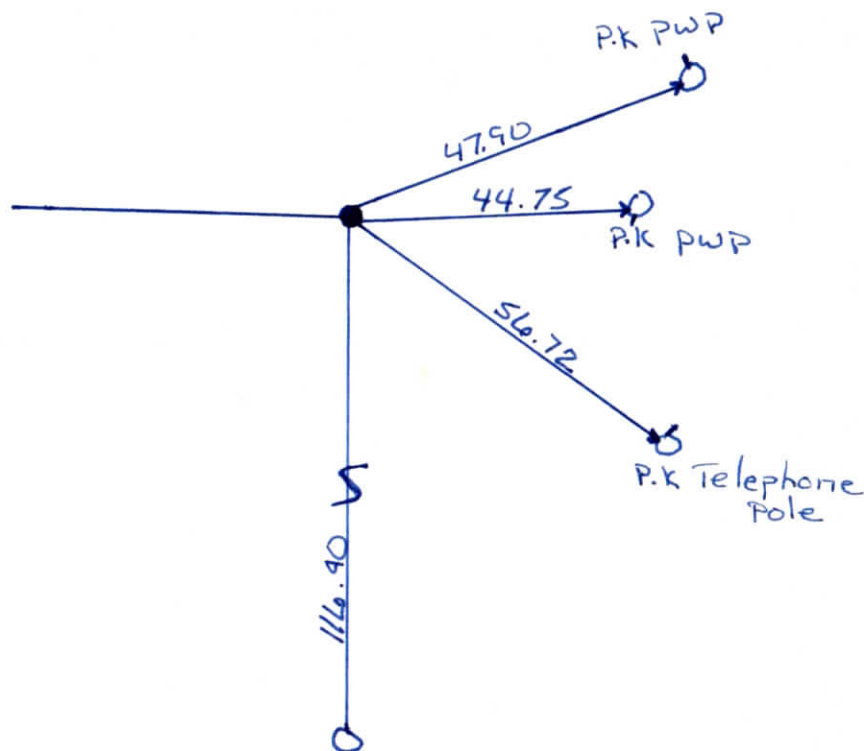
MICHAEL IRVIN

South Broadview NO. 2 "SEC. A" #219

INDICATE CORNER REFERENCED



DESCRIBE CORNER REFERENCED



STATE PLANE COORDINATE DATA

INDIANA ZONE: WEST

X _____

Y _____

ESTABLISHED BY:

APPROVED BY

DATE

REFERENCED BY:

DATE

Elmo D Dockery

JAN. 14 1976

CORNER RECORD
WARRICK COUNTY



DESCRIPTION:

NW CORNER w/2 NE/4

SECTION 35, T. 6 S. R. 9 W.

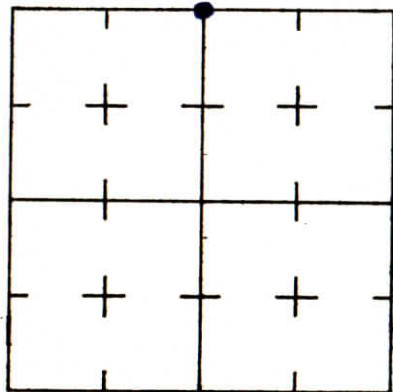
2nd PRINCIPLE MERIDIAN

South Broadview Sub. No. 3 # 255

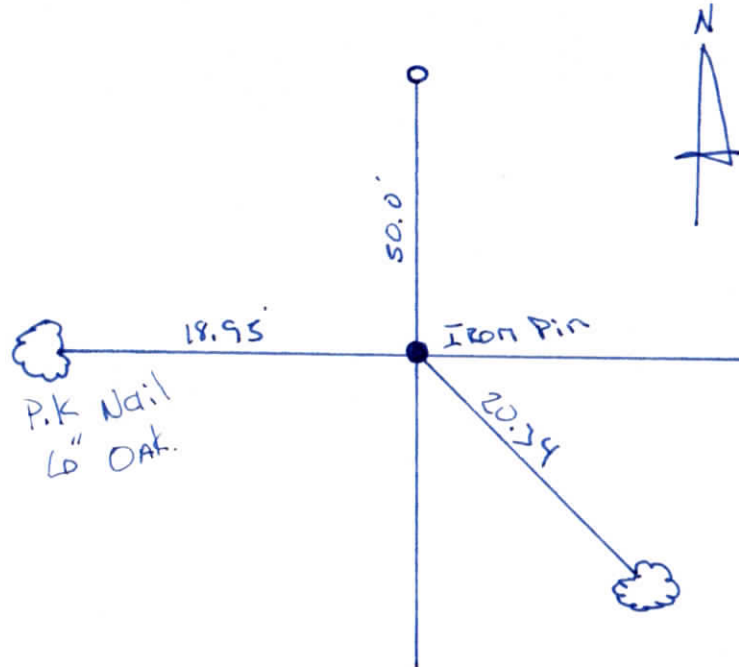
WARRICK COUNTY SURVEYOR

MICHAEL IRVIN

INDICATE CORNER REFERENCED



DESCRIBE CORNER REFERENCED



STATE PLANE COORDINATE DATA

INDIANA ZONE: WEST

X _____

Y _____

ESTABLISHED BY:

APPROVED BY

DATE

REFERENCED BY:

DATE

Elmo D Dockey

April 1977

CORNER RECORD
WARRICK COUNTY



DESCRIPTION :

NW CORNER W/2 NE/4

SECTION 35, T. 6 S. R. 9 W.

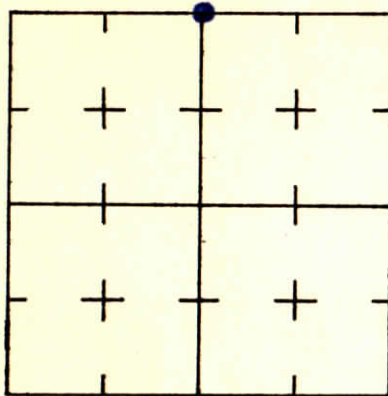
2nd PRINCIPLE MERIDIAN

South Broadview NO. 3 #257

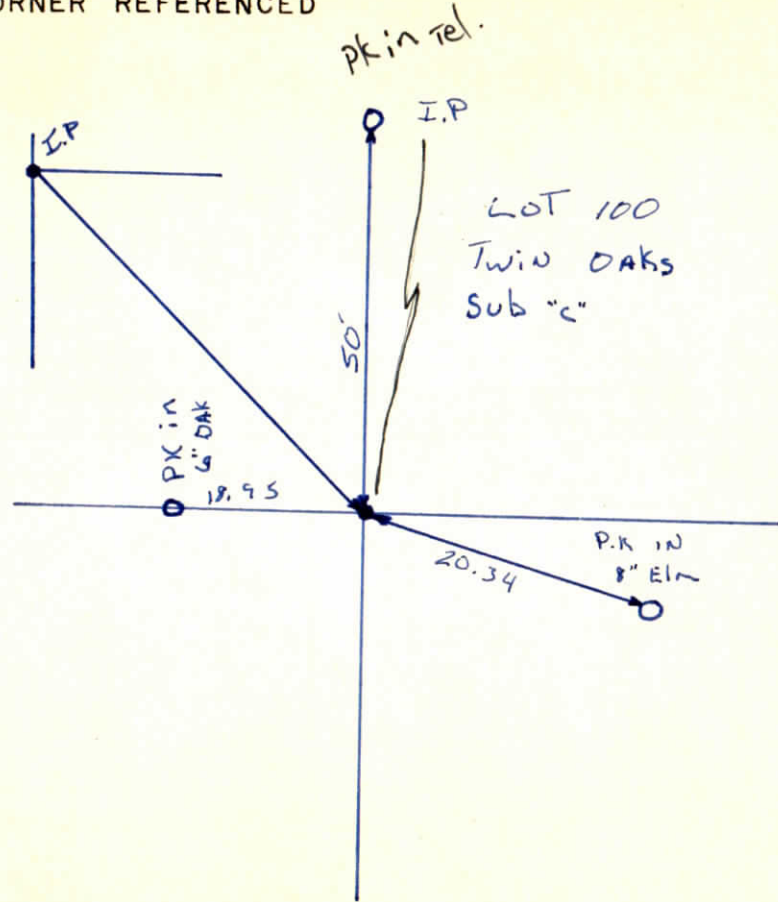
WARRICK COUNTY SURVEYOR

MICHAEL IRVIN

INDICATE CORNER REFERENCED



DESCRIBE CORNER REFERENCED



STATE PLANE COORDINATE DATA

INDIANA ZONE: WEST

X _____

Y _____

ESTABLISHED BY:

APPROVED BY

DATE

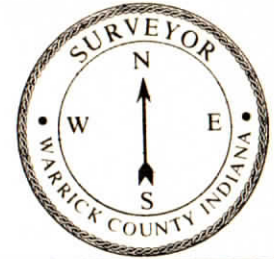
REFERENCED BY:

DATE

Elmo D Dockery

Feb 8, 1977

CORNER RECORD
WARRICK COUNTY



DESCRIPTION:

NW CORNER NE¹/₄ NE¹/₄

SECTION 35, T. 6 S. R. 9 W.

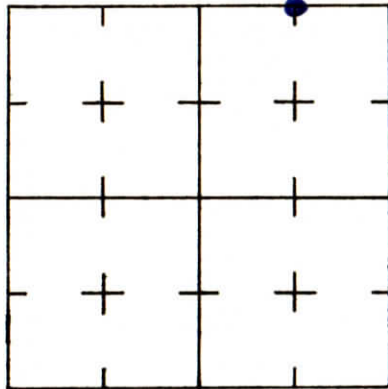
2nd PRINCIPLE MERIDIAN

Heritage Commercial Court

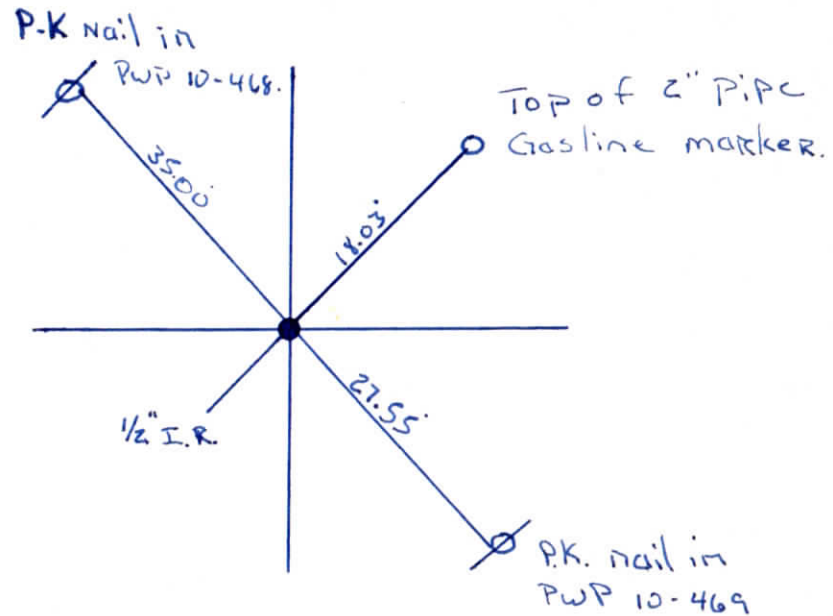
WARRICK COUNTY SURVEYOR

MICHAEL IRVIN

INDICATE CORNER REFERENCED



DESCRIBE CORNER REFERENCED



STATE PLANE COORDINATE DATA

INDIANA ZONE: WEST

X _____

Y _____

ESTABLISHED BY:

APPROVED BY

DATE

REFERENCED BY:

DATE

Ralph A. Easley Jr

April 12, 1978.

CORNER RECORD
WARRICK COUNTY

DESCRIPTION:

NW CORNER NE/4 NE/4

SECTION 35, T. 40 S. R. 9 W.

2nd PRINCIPLE MERIDIAN

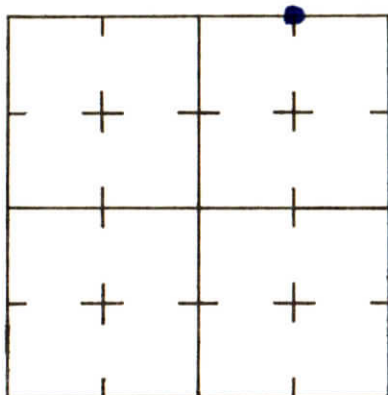
Heritage Commercial Court.

WARRICK COUNTY SURVEYOR

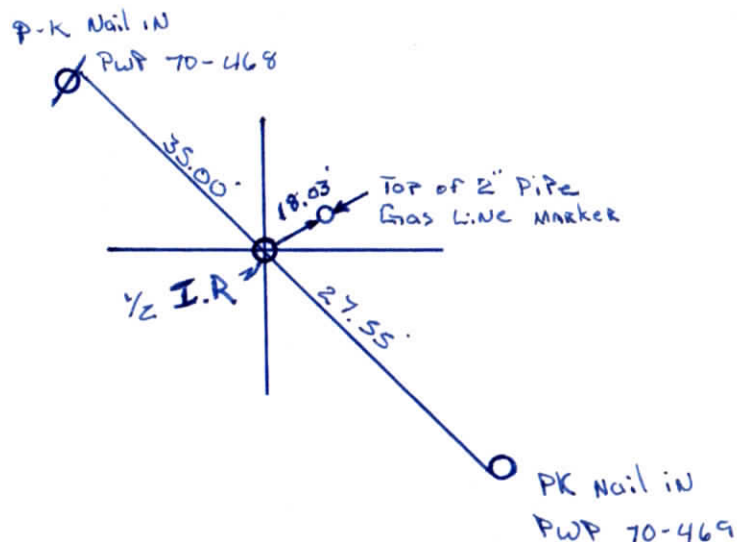
MICHAEL IRVIN



INDICATE CORNER REFERENCED



DESCRIBE CORNER REFERENCED



STATE PLANE COORDINATE DATA

INDIANA ZONE: WEST

X _____

Y _____

ESTABLISHED BY:

APPROVED BY

DATE

REFERENCED BY:

DATE

Ralph A. Easley Jr. April 12 1978

CORNER RECORD
WARRICK COUNTY

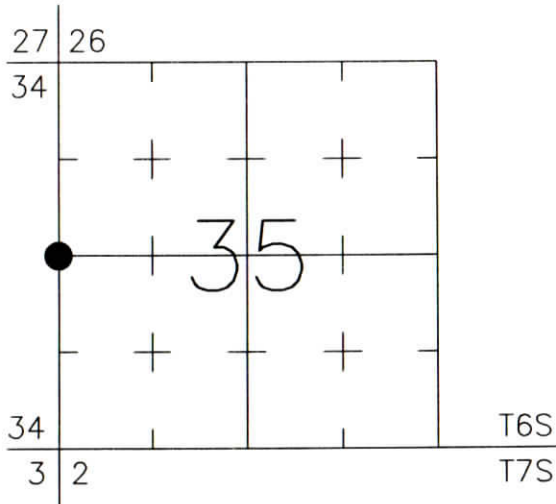


DESCRIPTION:
SOUTHWEST CORNER NORTHWEST QUARTER
SECTION 35, T. 6 S., R. 9 W.
2nd PRINCIPAL MERIDIAN

WARRICK COUNTY SURVEYOR
KARAN HARGRAVE-BARNHILL

FOR NOTES ON CORNER HISTORY SEE REVERSE.

INDICATE CORNER REFERENCED:



MONUMENT TYPE: SET BRASS DISK
SIZE: 2-1/2" DIA.
DEPTH/HEIGHT: FLUSH IN CONC. PVMT.
REFERENCE TIE DRAWING:

STATE PLANE COORDINATE DATA:
INDIANA WEST ZONE, NAD 83 (1997)
U.S. SURVEY FEET

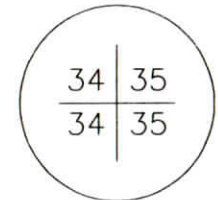
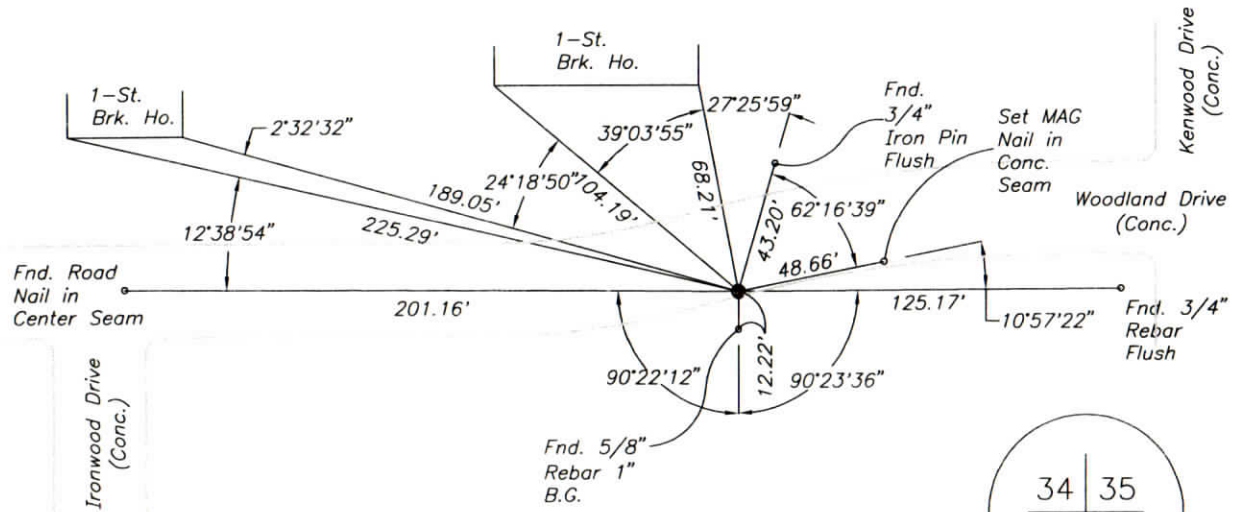
X ---

Y ---

COORDINATES ESTABLISHED BY:

APPROVED BY:

DATE:



Stamping
on Disk

REFERENCED BY: D.DREES/C.BINKLEY

DATE: 9/3/02

APPROVED BY: P.JONES, RLS#9600016

DATE: 5/13/03

CORNER FILE CODE:
T6S-R9W-X-17

CORNER HISTORY:

CORNER FILE CODE:
T6S-R9W-X-17

ORIGINAL USPLS SURVEY: Corner established by Jacob Fowler, Dec. 18, 1805 "Post".

COUNTY SURVEYOR'S BOOKS: (No entries found which include descriptions of a monument or bearing trees).

OTHER SURVEYS AND PLATS: "Corner Record" cards show references taken from the 1977 plats of South Broadview No. 5 Sections "A" and "D" and other subdivisions (stone called on plats).

The Bell Road Route Survey (Bernardin-Lochmueller & Assoc. 1989, unrecorded) tied to nails in Woodland Drive as shown on the Corner Record cards, and a rebar at the NW corner of Lot 598 of South Broadview No. 5 Sec. D in order to re-establish the corner location.

VERIFICATION OF CORNER POSITION: August, 2002: One of the two nails in Woodland Drive and the rebar at the NW corner of Lot 598 were recovered as previously tied in by the Bell Road survey in order to re-establish the corner position. A MAG nail was set 9/3/02 in a lead plug in a drill hole as a temporary marker. 5/12/03 the MAG nail was replaced with the brass disk shown.

Perry E. Jones 5/13/03

DESCRIPTION:

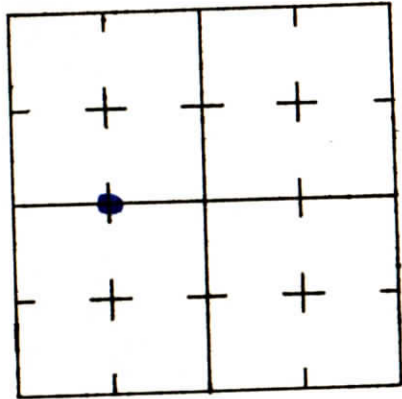
NW CORNER NE 1/4 SW 1/4

SECTION 35, T. 6 S.

2nd PRINCIPLE MERIDIAN

Autumn Ridge Est # 460

INDICATE CORNER REFERENCE



STATE PLANE COORDINATE DATA

INDIANA ZONE: WEST

X _____

Y _____

ESTABLISHED BY:

APPROVED BY

CORNER RECORD
WARRICK COUNTY

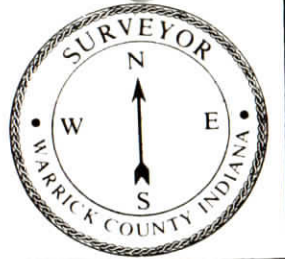
DESCRIPTION:

NW CORNER NE 1/4 SW 1/4

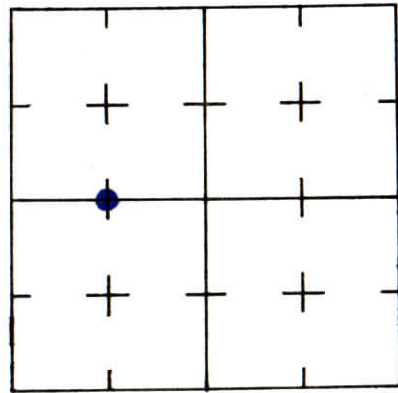
SECTION 35, T. 6 S. R. 9 W.

2nd PRINCIPLE MERIDIAN

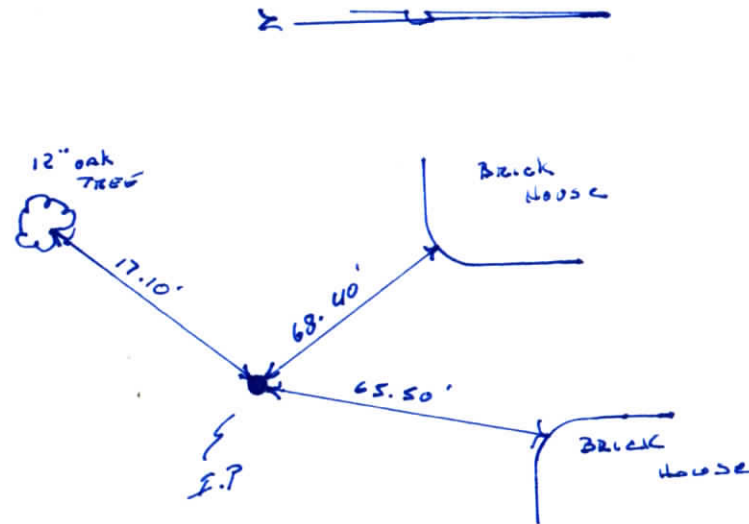
WARRICK COUNTY SURVEYOR
KARAN HARGRAVE-BARNHILL



INDICATE CORNER REFERENCED



DESCRIBE CORNER REFERENCED



STATE PLANE COORDINATE DATA

INDIANA ZONE: WEST

X _____

Y _____

ESTABLISHED BY:

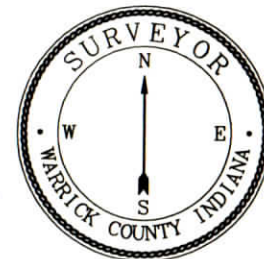
APPROVED BY

DATE

REFERENCED BY:

DATE

CORNER RECORD
WARRICK COUNTY

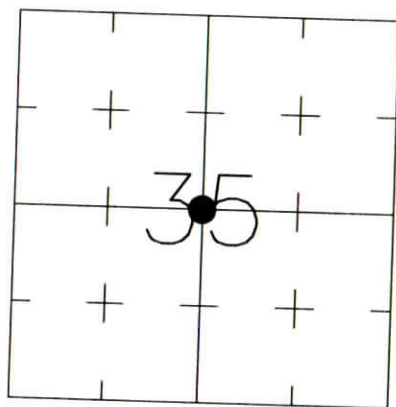


DESCRIPTION:
SOUTHWEST CORNER NORTHEAST QUARTER
SECTION 35, T. 6 S., R. 9 W.
2nd PRINCIPAL MERIDIAN

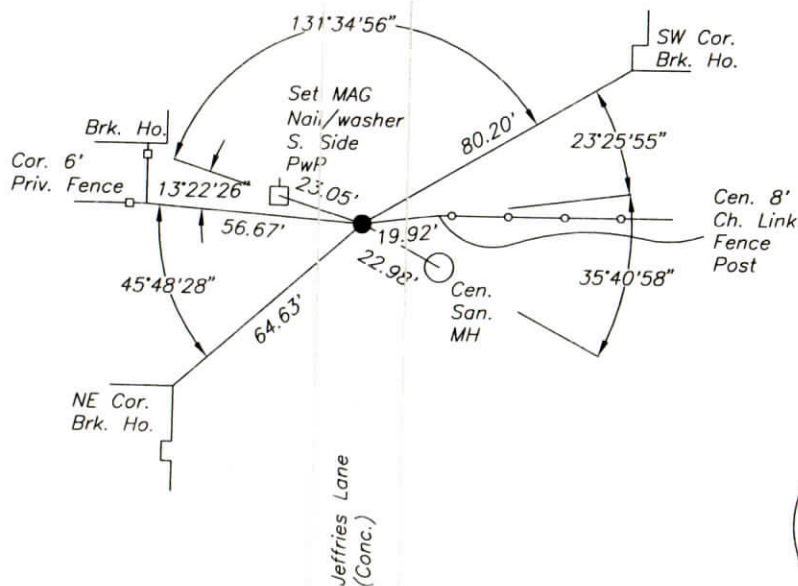
WARRICK COUNTY SURVEYOR
KARAN HARGRAVE-BARNHILL

FOR NOTES ON CORNER HISTORY SEE REVERSE.

INDICATE CORNER REFERENCED:



MONUMENT TYPE: SET BRASS DISK
SIZE: 2-1/2" DIA.
DEPTH/HEIGHT: FLUSH IN CONC. PVMT.
REFERENCE TIE DRAWING:



STATE PLANE COORDINATE DATA:
INDIANA WEST ZONE, NAD 83 (1997)
U.S. SURVEY FEET

X _____

Y _____

COORDINATES ESTABLISHED BY:

APPROVED BY:

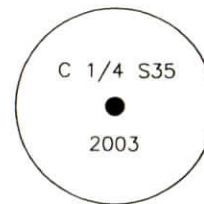
DATE:

REFERENCED BY: D.DREES/C.BINKLEY

DATE: 8/26/02

APPROVED BY: P.JONES, RLS#9600016

DATE: 10/28/03



Stamping
on Disk

CORNER FILE CODE:
T6S-R9W-X-19

CORNER HISTORY:

ORIGINAL USPLS SURVEY: (Center of Section not monumented by USPLS Survey).

COUNTY SURVEYOR'S BOOKS: Book 1 P. 31: Isaac Adams WCS Sept. 1, 1854 "Stone"

Book 2 P. 167: Louis Meyer WCS November 29, 1901 "SandStone Set".

Book 3 P. 279 E.Lenn, Surveyor, March 10, 1931 Stone found in place".

OTHER SURVEYS AND PLATS: "Corner Record" cards show a reference to "X cut in pavement" as taken from the 1986 plat of Sharon Meadows Subdivision and other subdivision plats.

VERIFICATION OF CORNER POSITION: August, 2002: The "X" cut in pavement was found in place as shown on the plat of Sharon Meadows Subdivision. References shown on the subdivision plat checked within 0.1 foot. The brass disk shown was placed at the "X" cut in pavement.

Perry E. Jones 10/28/03

**CORNER RECORD
WARRICK COUNTY**

DESCRIPTION :

NW CORNER NE 1/4 SW 1/4

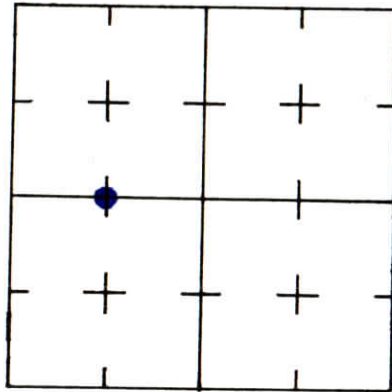
SECTION 35, T. 40 S. R. 9 W.

2nd PRINCIPLE MERIDIAN

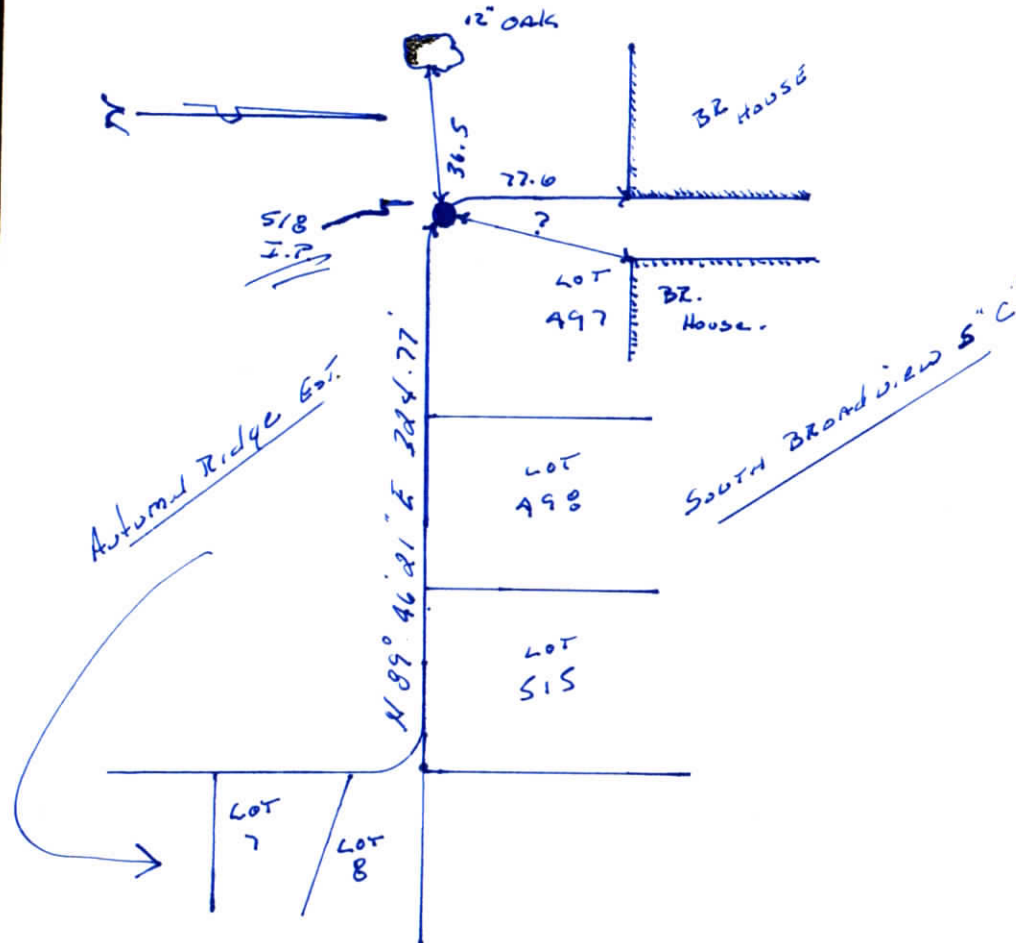
**WARRICK COUNTY SURVEYOR
KARAN HARGRAVE-BARNHILL**



INDICATE CORNER REFERENCED



DESCRIBE CORNER REFERENCED



STATE PLANE COORDINATE DATA

INDIANA ZONE: WEST

X _____

Y _____

ESTABLISHED BY:

APPROVED BY

DATE

REFERENCED BY:

DATE

Elmo Dockery

9-4-90

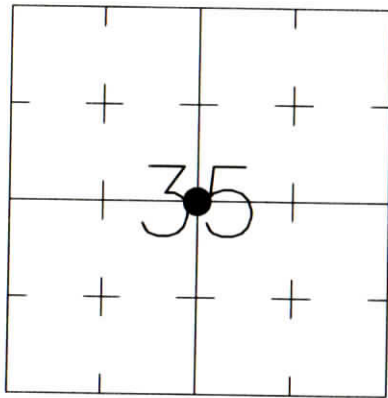
CORNER RECORD
WARRICK COUNTY



DESCRIPTION:
SOUTHWEST CORNER NORTHEAST QUARTER
SECTION 35, T. 6 S., R. 9 W.
2nd PRINCIPLE MERIDIAN

WARRICK COUNTY SURVEYOR
KARAN HARGRAVE-BARNHILL

INDICATE CORNER REFERENCED:



MONUMENT TYPE: "X" CUT IN CONC. PVMT.
SIZE:
DEPTH/HEIGHT: FLUSH
REFERENCE TIE DRAWING:

FOR NOTES ON CORNER HISTORY SEE REVERSE.

STATE PLANE COORDINATE DATA:
INDIANA WEST ZONE, NAD 83 (1997)
U.S. SURVEY FEET

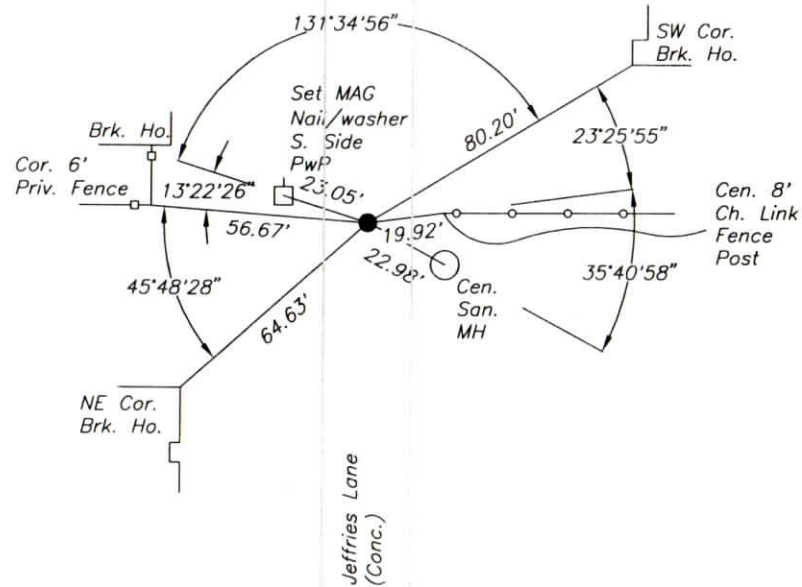
X _____

Y _____

COORDINATES ESTABLISHED BY:

APPROVED BY:

DATE:



REFERENCED BY: D.DREES/C.BINKLEY

DATE: 8/26/02

APPROVED BY: P.JONES, RLS#9600016

DATE: 8/27/02

CORNER FILE CODE:
T6S-R9W-X-19

CORNER HISTORY:

CORNER FILE CODE:
T6S-R9W-X-19

ORIGINAL USPLS SURVEY: (Center of Section not monumented by USPLS Survey).

COUNTY SURVEYOR'S BOOKS: Book 1 P. 31: Isaac Adams WCS Sept. 1, 1854 "Stone"

Book 2 P. 167: Louis Meyer WCS November 29, 1901 "SandStone Set".

Book 3 P. 279 E.Lenn, Surveyor, March 10, 1931 Stone found in place".

OTHER SURVEYS AND PLATS: "Corner Record" cards show a reference to "X cut in pavement" as taken from the 1986 plat of Sharon Meadows Subdivision and other subdivision plats.

VERIFICATION OF CORNER POSITION: August, 2002: The "X" cut in pavement was found in place as shown on the plat of Sharon Meadows Subdivision. References shown on the subdivision plat checked within 0.1'.

Perry E. Jones 8/27/02

CORNER RECORD
WARRICK COUNTY

DESCRIPTION :

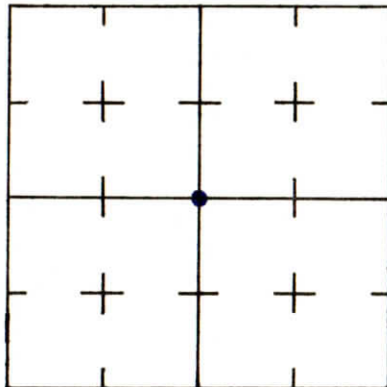
NW CORNER NW 1/4 SE 1/4
SECTION 35, T. 6 S. R. 9 W.
2nd PRINCIPLE MERIDIAN

WARRICK COUNTY SURVEYOR
MICHAEL IRVIN

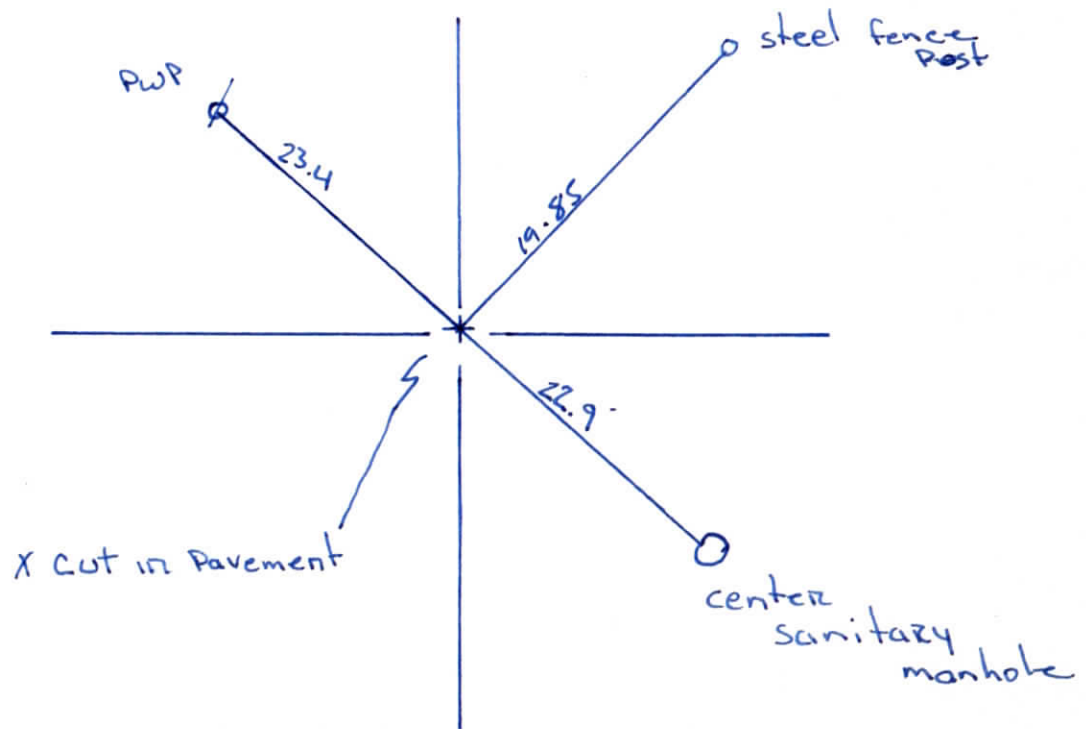


Sharon Meadows sub

INDICATE CORNER REFERENCED



DESCRIBE CORNER REFERENCED



STATE PLANE COORDINATE DATA

INDIANA ZONE: WEST

X _____

Y _____

ESTABLISHED BY:

APPROVED BY

DATE

REFERENCED BY:

DATE

Alvin L. Paul

Nov 12, 1986

CORNER RECORD
WARRICK COUNTY



DESCRIPTION:

SE CORNER SW 1/4 NE 1/4

SECTION 35, T. 6 S. R. 9 W.

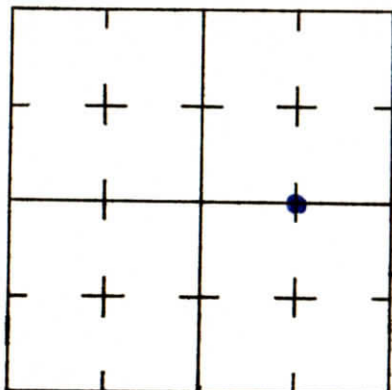
2nd PRINCIPLE MERIDIAN

Brentwood Sub #268

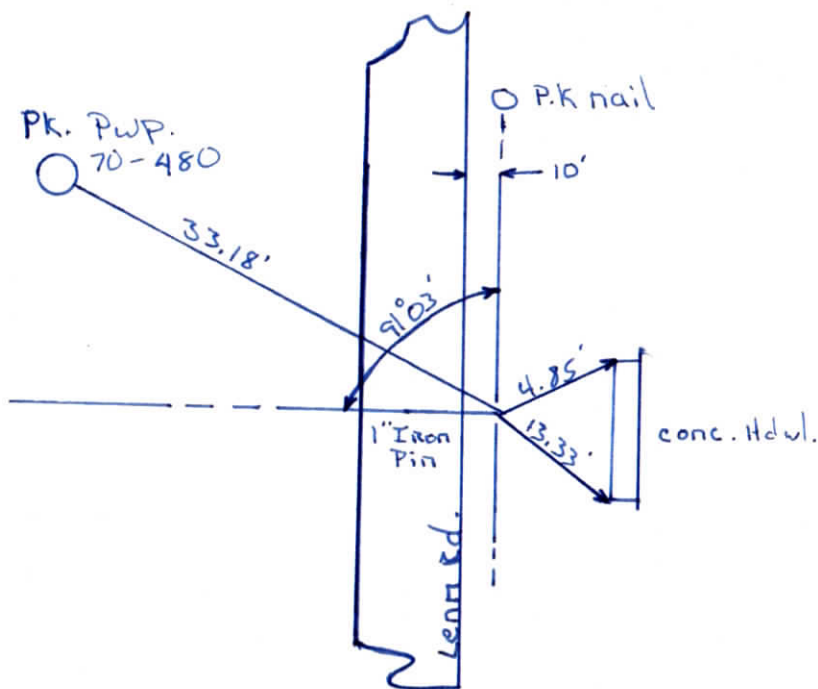
WARRICK COUNTY SURVEYOR

MICHAEL IRVIN

INDICATE CORNER REFERENCED



DESCRIBE CORNER REFERENCED



STATE PLANE COORDINATE DATA

INDIANA ZONE: WEST

X _____

Y _____

ESTABLISHED BY:

APPROVED BY

DATE

REFERENCED BY:

DATE

Edward J. Bottomley Aug 10, 1977

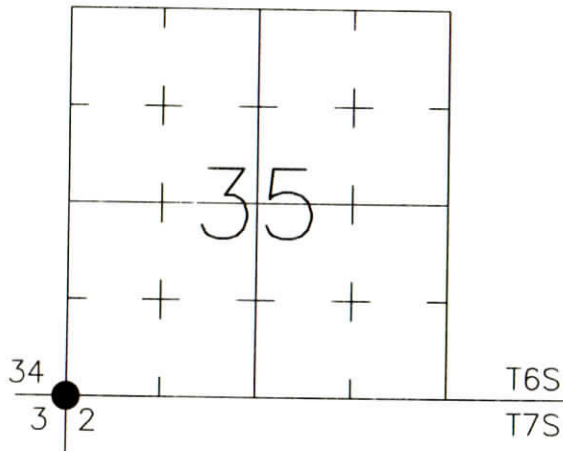
CORNER RECORD WARRICK COUNTY



DESCRIPTION:
 SOUTHWEST CORNER _____
 SECTION 35, T. 6 S., R. 9 W.
 2nd PRINCIPAL MERIDIAN

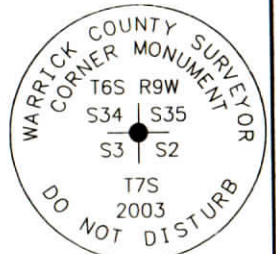
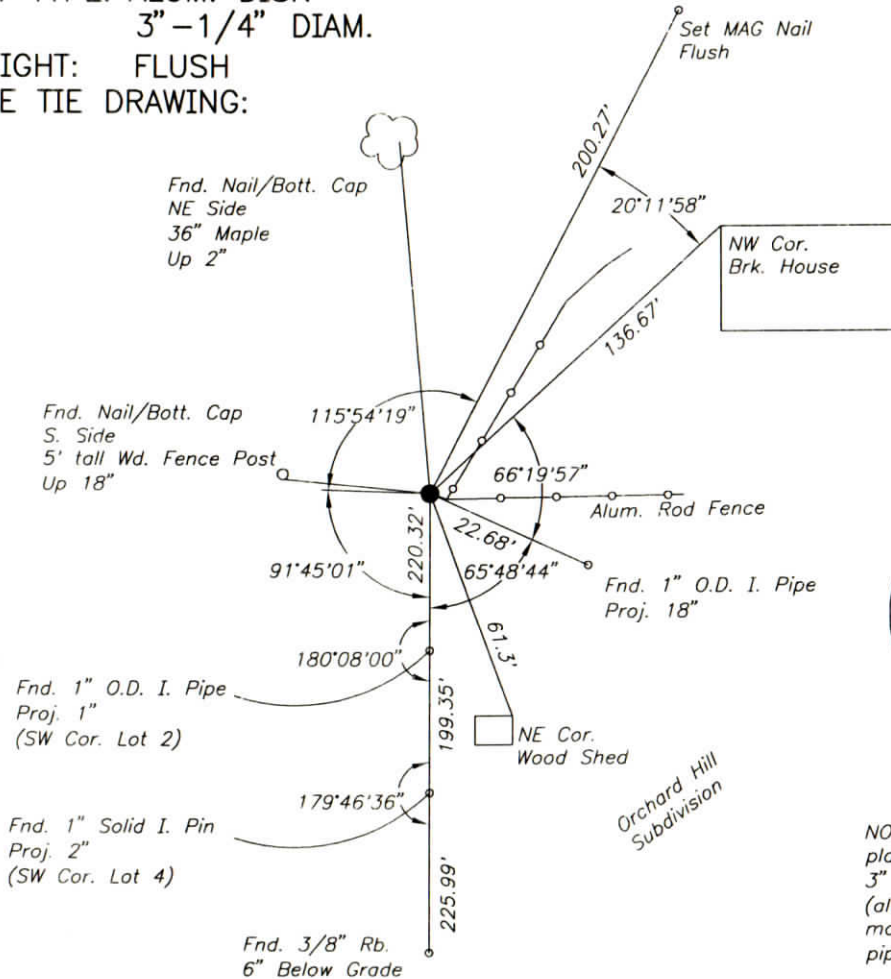
WARRICK COUNTY SURVEYOR
 KARAN HARGRAVE-BARNHILL

INDICATE CORNER REFERENCED:



MONUMENT TYPE: ALUM. DISK
 SIZE: 3" - 1/4" DIAM.
 DEPTH/HEIGHT: FLUSH
 REFERENCE TIE DRAWING:

FOR NOTES ON CORNER HISTORY SEE REVERSE.



Stamping
on Disk

NOTE: Alum. disk was placed vertically over a 3" O.D. iron pipe found (aluminum shaft of disk monument driven into pipe).

STATE PLANE COORDINATE DATA:
 INDIANA WEST ZONE, NAD 83 (1997)
 U.S. SURVEY FEET

X _____
 Y _____

COORDINATES ESTABLISHED BY:

APPROVED BY:

DATE:

REFERENCED BY: D.DREES/G.M.BURRESS DATE: 8/22/02
 DISK SET 10/24/03 D.DREES/G.M.BURRESS
 APPROVED BY: P.JONES, RLS#9600016 DATE: 10/28/03

CORNER FILE CODE:
 T6S-R9W-Z-17

CORNER HISTORY:

ORIGINAL USPLS SURVEY: Corner established by Jacob Fowler, Dec. 14, 1805 "Post in a Spring Branch"

COUNTY SURVEYOR'S BOOKS: Book 1 P. 13 Chester Elliott WCS July 15, 1851 "Stone Corner".

Book 1 P. 97 John C. Frary March 12, 1858 (Set Stones 4 Ch 48.5 Links N, and 9 Ch. 94 Lks. N of corner).

Book 2 P. 8: O.B.Pasco WCS May 20, 1880 Stone Marked NW S 2".

Book 2 P. __: O.B.Pasco WCS Oct. 1, 1880 "Stone marked thus +" (also Stones "+" 5.86 ch. W & 7.67-1/2 ch S.)

OTHER SURVEYS AND PLATS: "Corner Code System" cards show an (undated) IP and distances to other IP's.

The 1953 plat of Orchard Hills Subdivision shows ties to a 2" iron pipe.

VERIFICATION OF CORNER POSITION: August 2002: a 3" O.D. pipe was found in place, a rebar with plastic cap stamped "BLA FIRM 0030" was set inside the pipe and driven flush, and referenced. March 2003: ties were made to found lot corner monuments along the west line of Orchard Hill Subdivision, as shown, which confirmed the pipe's position within 0.4 feet. October 24, 2003: the rebar/cap was removed and the disk shown was set in place vertically over the 3" pipe, flush with existing ground.

Perry E. Jones 10/28/03

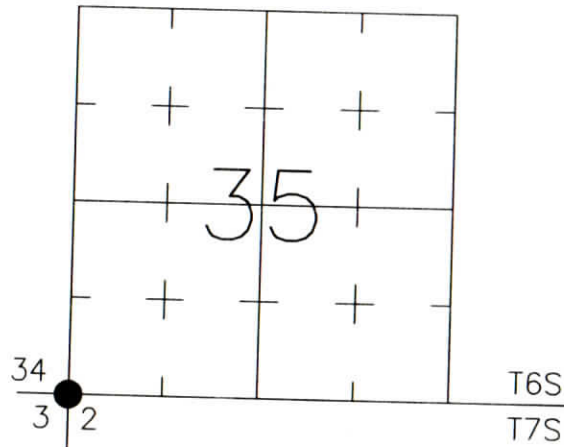
CORNER RECORD
WARRICK COUNTY



DESCRIPTION:
SOUTHWEST CORNER _____
SECTION 35, T. 6 S., R. 9 W.
2nd PRINCIPLE MERIDIAN

WARRICK COUNTY SURVEYOR
KARAN HARGRAVE-BARNHILL

INDICATE CORNER REFERENCED:



MONUMENT TYPE: I. Pipe
SIZE: 3" O.D.
DEPTH/HEIGHT: 18" Below Grade
REFERENCE TIE DRAWING:

NOTE: 3/4" Rebar
w/Cap Stamped
"BLA FIRM 0030"
set inside pipe
found, driven flush.

Fnd. Nail/Bott. Cap
NE Side
36" Maple
Up 2"

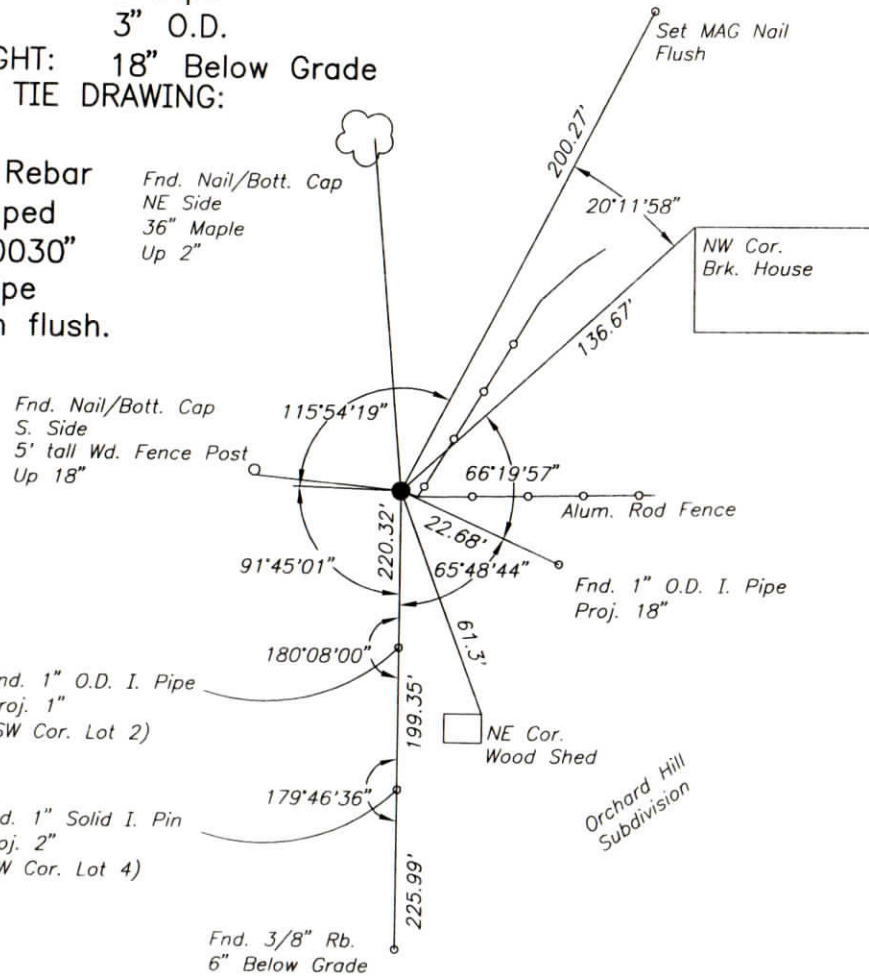
Fnd. Nail/Bott. Cap
S. Side
5' tall Wd. Fence Post
Up 18"

Fnd. 1" O.D. I. Pipe
Proj. 1"
(SW Cor. Lot 2)

Fnd. 1" Solid I. Pin
Proj. 2"
(SW Cor. Lot 4)

Fnd. 3/8" Rb.
6" Below Grade

FOR NOTES ON CORNER HISTORY SEE REVERSE.



STATE PLANE COORDINATE DATA:
INDIANA WEST ZONE, NAD 83 (1997)
U.S. SURVEY FEET

X _____

Y _____

COORDINATES ESTABLISHED BY:

APPROVED BY:

DATE:

REFERENCED BY: D.DREES/G.M.BURRESS

DATE: 8/22/02

APPROVED BY: P.JONES, RLS#9600016

DATE: 3/11/03

CORNER FILE CODE:
T6S-R9W-Z-17

CORNER HISTORY:

ORIGINAL USPLS SURVEY: Corner established by Jacob Fowler, Dec. 14, 1805 "Post in a Spring Branch"

COUNTY SURVEYOR'S BOOKS: Book 1 P. 13 Chester Elliott WCS July 15, 1851 "Stone Corner".

Book 1 P. 97 John C. Frary March 12, 1858 (Set Stones 4 Ch 48.5 Links N, and 9 Ch. 94 Lks. N of corner).

Book 2 P. 8: O.B.Pasco WCS May 20, 1880 Stone Marked NW S 2".

Book 2 P. ___: O.B.Pasco WCS Oct. 1, 1880 "Stone marked thus +" (also Stones "+" 5.86 ch. W & 7.67-1/2 ch S.)

OTHER SURVEYS AND PLATS: "Corner Code System" cards show an (undated) IP and distances to other IP's.

The 1953 plat of Orchard Hills Subdivision shows ties to a 2" iron pipe.

VERIFICATION OF CORNER POSITION: August 2002: the 3" O.D. pipe shown was found in place, a rebar with cap was set inside the pipe and driven flush, and referenced. March 2003: ties were made to found lot corner monuments along the west line of Orchard Hill Subdivision, as shown, which confirmed the pipe's position within 0.4 feet.

Perry E. Jones 3/11/03

CORNER RECORD
WARRICK COUNTY

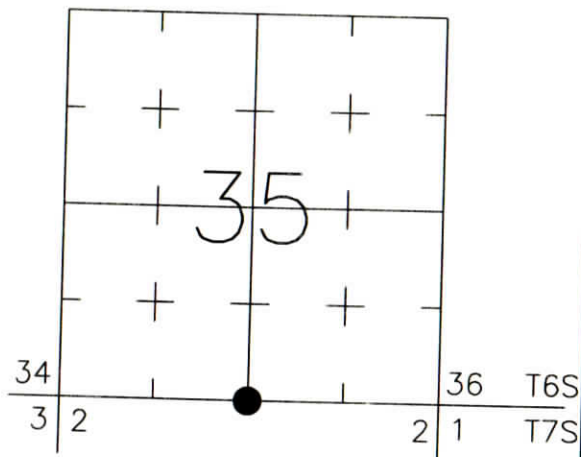


DESCRIPTION:
SOUTHWEST CORNER SOUTHEAST QUARTER
SECTION 35, T. 6 S., R. 9 W.
2nd PRINCIPAL MERIDIAN

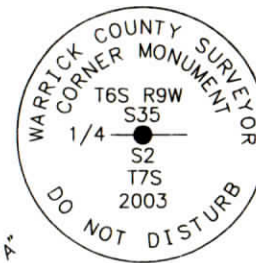
WARRICK COUNTY SURVEYOR
KARAN HARGRAVE-BARNHILL

FOR NOTES ON CORNER HISTORY SEE REVERSE.

INDICATE CORNER REFERENCED:



MONUMENT TYPE: ALUMINUM DISK
SIZE: 3-1/4" DIAM.
DEPTH/HEIGHT: 2" BELOW GRADE
REFERENCE TIE DRAWING:



Stamping
on Disk

STATE PLANE COORDINATE DATA:
INDIANA WEST ZONE, NAD 83 (1997)
U.S. SURVEY FEET

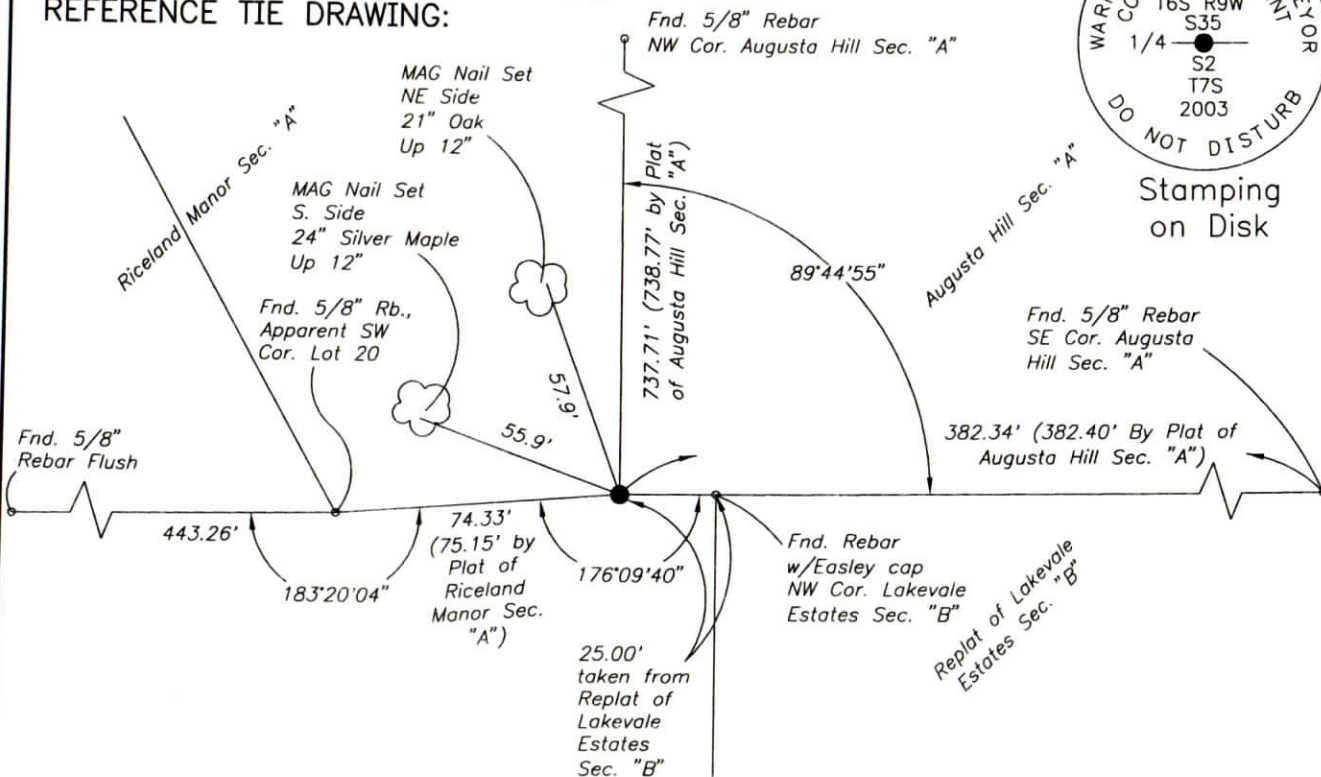
X _____

Y _____

COORDINATES ESTABLISHED BY:

APPROVED BY:

DATE:



REFERENCED BY: D.DREES/G.M.BURRESS

DATE: 5/23/03

APPROVED BY: P.JONES, RLS#9600016

DATE: 5/29/03

CORNER FILE CODE:
T6S-R9W-Z-19

CORNER HISTORY:

ORIGINAL USPLS SURVEY: Corner established by Jacob Fowler, Dec. 14, 1805 "Post".

COUNTY SURVEYOR'S BOOKS: Book 1 P. 286: O.B.Pasco, Dep. WCS Sept. 8, 1870 "Post".

Book 2 P. 8: O.B.Pasco WCS May 20, 1880 "Stone Marked H & H".

Book 2 P. 167: Louis Meyer WCS November 29, 1901 "SandStone Set".

Book 3 P. 249 G.M. Emmerson Dep. WCS March 9, 1920 "Stone" (Elm 10 N40E 10L).

OTHER SURVEYS AND PLATS: "Corner Record" cards show references to a 5/8" I.P. as taken from the 1984 plat of Augusta Hill Subdivision and the 1987 plat of Riceland Manor Section A.

The 1994 plat of the Woods Subdivision Sec. 1 ties to the corner and notes "No monument found. Reset using references shown on plat".

VERIFICATION OF CORNER POSITION: March, 2003: The corner position was re-established using a rebar found at the southeast corner of Augusta Hill Section "A" and a rebar found marking the northwest corner of the Replat of Lakevale Estates Section "B" (25.0' easterly of the corner). Ties to the northwest corner of Augusta Hill Section "A" and to the northeast corner of Riceland Manor Section A agreed with the re-established position within 1.1 feet. (Ties were also made to other nearby lot-corner monuments found in Riceland Manor Section A, but little consistency between platted and measured dimensions was found for these corners; therefore these ties were not used.) The re-established position appears to be consistent with the corner shown on the plat of The Woods Subdivision Section 1; note that this plat indicates several inconsistencies in monumentation along the south line of the southwest quarter of Section 35. May 23, 2003 the aluminum disk was set as shown.

Perry E. Jones 5/29/03

CORNER RECORD
WARRICK COUNTY



DESCRIPTION:

SW CORNER W 1/2 SE 1/4

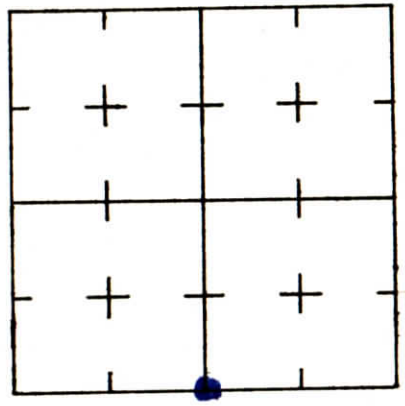
SECTION 35, T. 6 S. R. 9 W.

2nd PRINCIPLE MERIDIAN

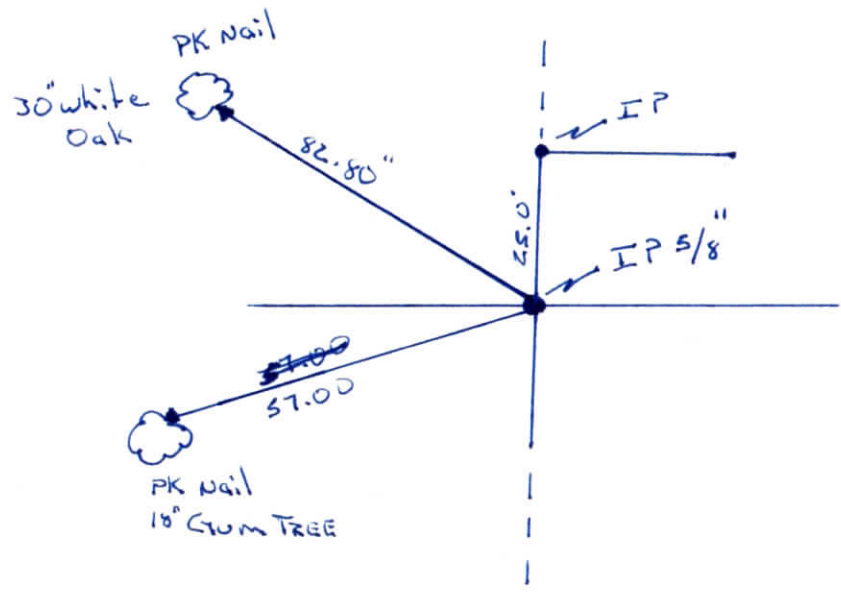
Overall Augusta Hills Plot #160

WARRICK COUNTY SURVEYOR
MICHAEL IRVIN

INDICATE CORNER REFERENCED



DESCRIBE CORNER REFERENCED



STATE PLANE COORDINATE DATA

INDIANA ZONE: WEST

X _____

Y _____

ESTABLISHED BY:

APPROVED BY

DATE

REFERENCED BY:

DATE

Elmo D Dockery

NOV 19 1984

CORNER RECORD
WARRICK COUNTY



DESCRIPTION:

SE CORNER E/2 SW/4

SECTION 35, T. 6 S. R. 9 W.

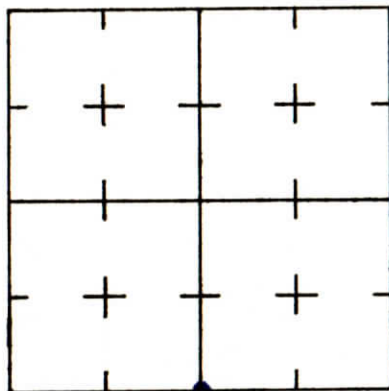
2nd PRINCIPLE MERIDIAN

Riceland Manor Sub

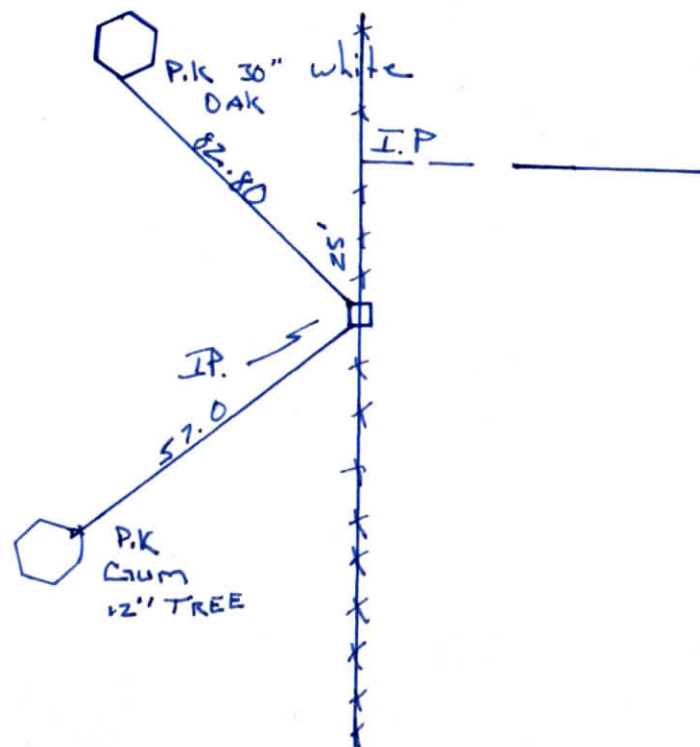
WARRICK COUNTY SURVEYOR

MICHAEL IRVIN

INDICATE CORNER REFERENCED



DESCRIBE CORNER REFERENCED



STATE PLANE COORDINATE DATA

INDIANA ZONE: WEST

X _____

Y _____

ESTABLISHED BY:

APPROVED BY

DATE

REFERENCED BY:

DATE

Alvin & Paul

Oct 10 1984

**CORNER RECORD
WARRICK COUNTY**



DESCRIPTION:

SW CORNER W/2 SE/4

SECTION 35, T. 6 S. R. 9 W.

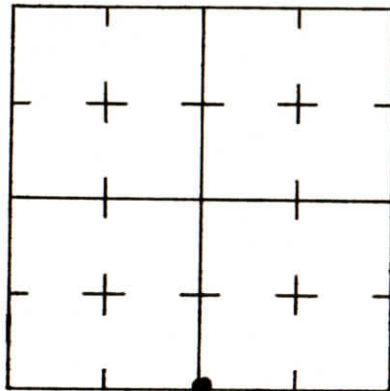
2nd PRINCIPLE MERIDIAN

Augusta Hill Sub.

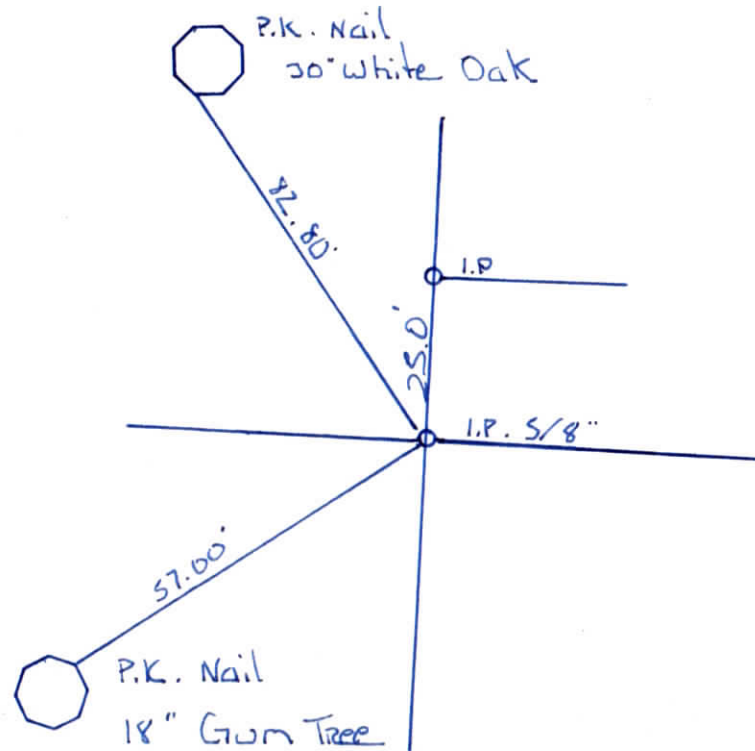
WARRICK COUNTY SURVEYOR

MICHAEL IRVIN

INDICATE CORNER REFERENCED



DESCRIBE CORNER REFERENCED



STATE PLANE COORDINATE DATA

INDIANA ZONE: WEST

X _____

Y _____

ESTABLISHED BY:

APPROVED BY

DATE

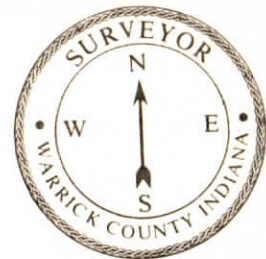
REFERENCED BY:

DATE

Alvin & Paul.

Feb 20 1985.

CORNER RECORD
WARRICK COUNTY



DESCRIPTION:

SE CORNER NW/4 SW/4

SECTION 35, T. 6 S. R. 9 W.

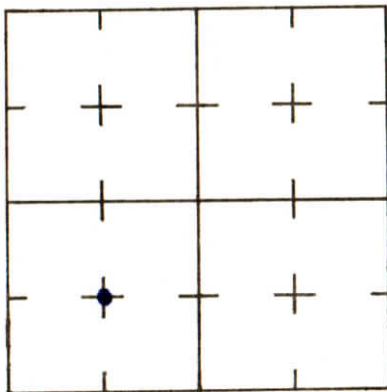
2nd PRINCIPLE MERIDIAN

WARRICK COUNTY SURVEYOR

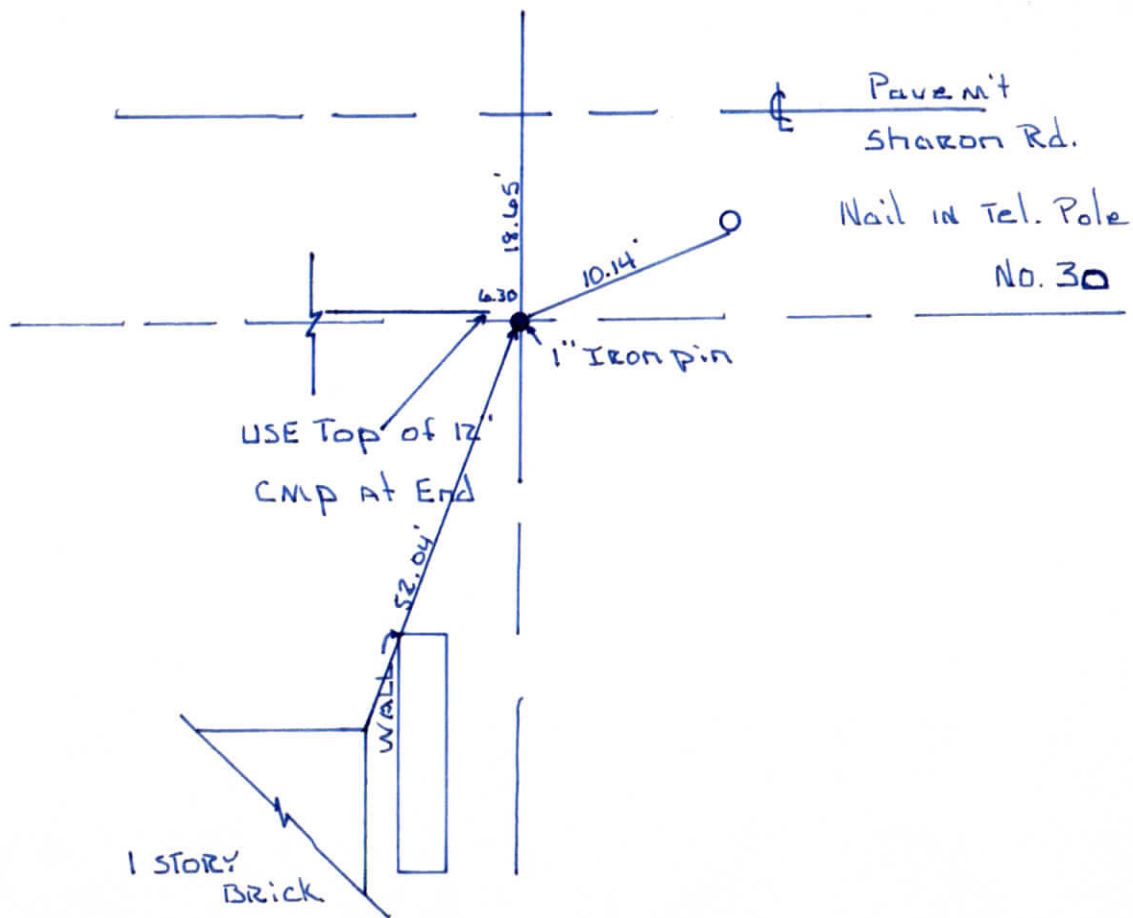
MICHAEL IRVIN

Sharon Rose Manor #303

INDICATE CORNER REFERENCED



DESCRIBE CORNER REFERENCED



STATE PLANE COORDINATE DATA

INDIANA ZONE: WEST

X _____

Y _____

ESTABLISHED BY: _____

APPROVED BY

DATE

REFERENCED BY:

DATE

Elmo D Dockery

Feb 15th 1990

CORNER RECORD
WARRICK COUNTY



DESCRIPTION:

SE CORNER NW 1/4 SW 1/4

SECTION 35, T. 6 S. R. 9 W.

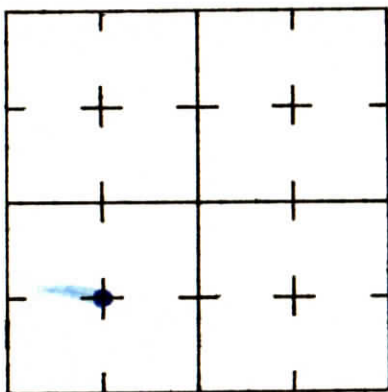
2nd PRINCIPLE MERIDIAN

WARRICK COUNTY SURVEYOR

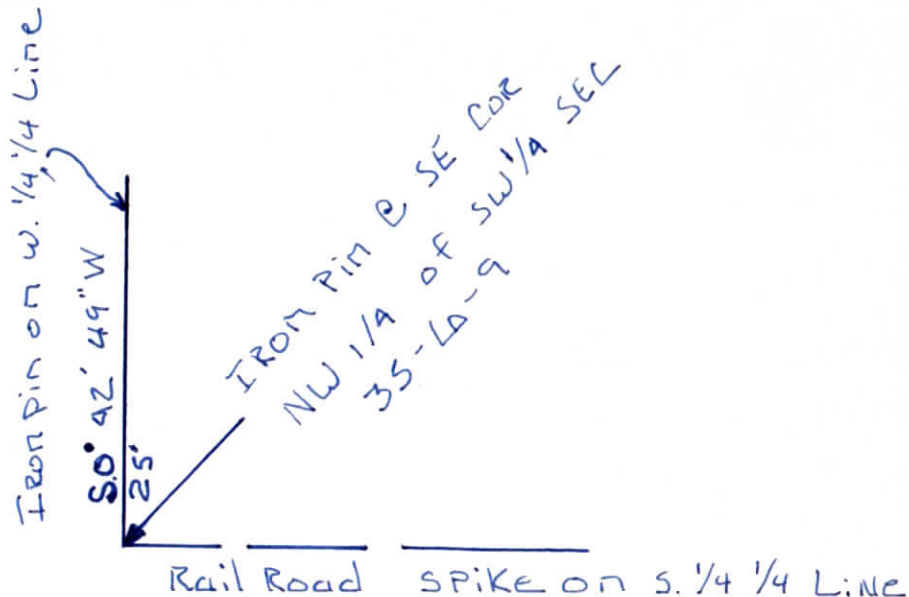
MICHAEL IRVIN

South Broadview No. 5, Sec "D" Sub. # 295

INDICATE CORNER REFERENCED



DESCRIBE CORNER REFERENCED



STATE PLANE COORDINATE DATA

INDIANA ZONE: WEST

X _____

Y _____

ESTABLISHED BY:

APPROVED BY

DATE

REFERENCED BY:

DATE

Elmo D. Dockery

Sept. 12, 1979

CORNER RECORD
WARRICK COUNTY



DESCRIPTION :

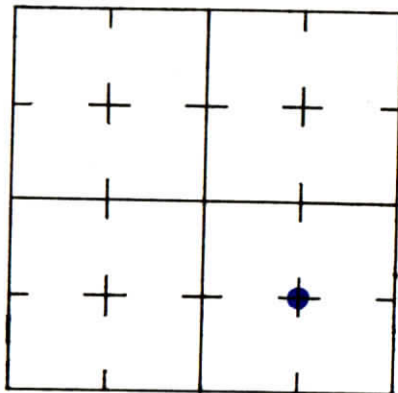
SE CORNER NW 1/4 SW 1/4

SECTION 35, T. 4 S. R. 9 W.

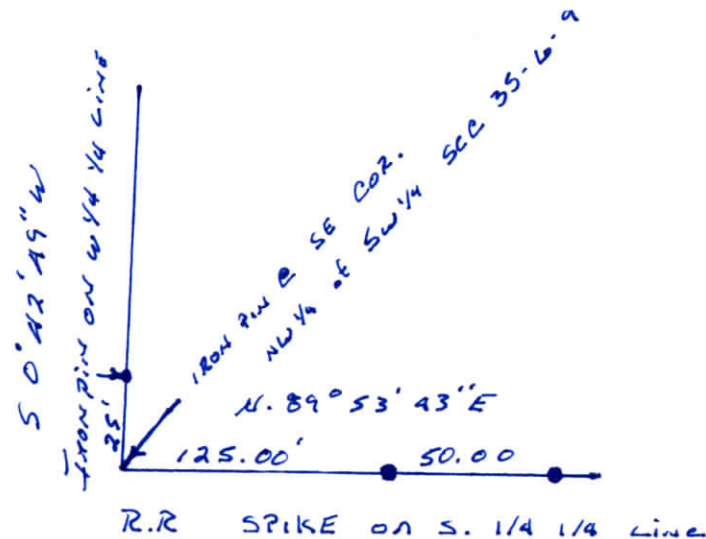
2nd PRINCIPLE MERIDIAN

WARRICK COUNTY SURVEYOR
KARAN HARGRAVE-BARNHILL

INDICATE CORNER REFERENCED



DESCRIBE CORNER REFERENCED



STATE PLANE COORDINATE DATA

INDIANA ZONE: WEST

X _____

Y _____

ESTABLISHED BY:

APPROVED BY

Phillis Barnhill

DATE

9-12-79

REFERENCED BY:

Elmo Dockery

DATE

1979

**CORNER RECORD
WARRICK COUNTY**

WARRICK COUNTY SURVEYOR

MICHAEL IRVIN



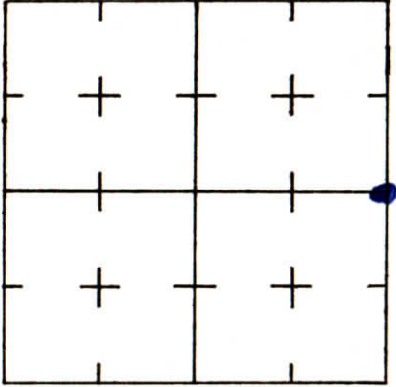
DESCRIPTION: SW CORNER SW 1/4 NW 1/4

SECTION 35, T. 6 S., R. 9 W.

2nd PRINCIPLE MERIDIAN

South Broadway MO S sec "A" # 272

INDICATE CORNER REFERENCED



STATE PLANE COORDINATE DATA

INDIANA ZONE: WEST

X

Y

ESTABLISHED BY:

APPROVED BY

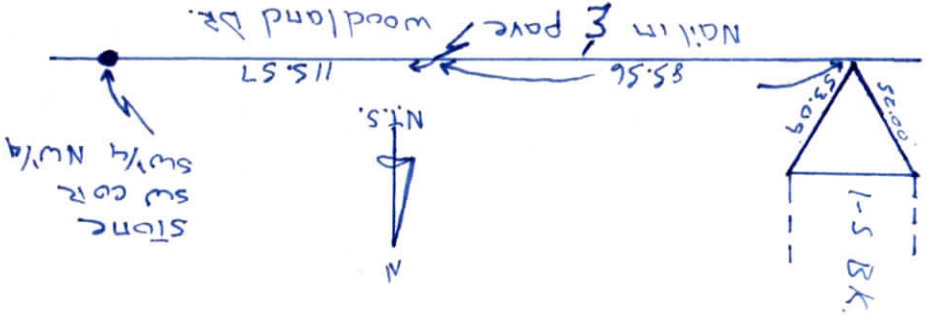
DATE

REFERENCED BY:

DATE

Elmo D Boolecky

Jan 11, 1978



DESCRIBE CORNER REFERENCED

**CORNER RECORD
WARRICK COUNTY**

DESCRIPTION:

bc CORNER bc/h bc/h

SECTION 35, T. 4 S.

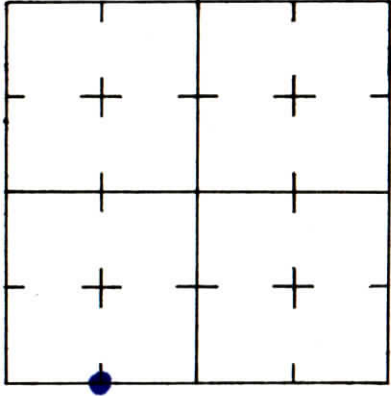
R. 9 W.

2nd PRINCIPLE MERIDIAN

WARRICK COUNTY SURVEYOR
KARAN HARGRAVE-BARNHILL



INDICATE CORNER REFERENCED



STATE PLANE COORDINATE DATA

INDIANA ZONE: WEST

X

Y

ESTABLISHED BY:

APPROVED BY

DATE

REFERENCED BY:

DATE

KARLA A. EASLEY SR.

2-14-78

DESCRIBE CORNER REFERENCED

HERITAGE COMMERCIAL COURT

R.K. MAIL

PLP 70-468



Top of 2" PIPE

CASLIPSE MARKER

PLP 70-469

Ø P.K. MAIL

22.55'

N 59° 50' 30" E

19.03'

35.60'

**CORNER RECORD
WARRICK COUNTY**

**WARRICK COUNTY SURVEYOR
KARAN HARGRAVE-BARNHILL**

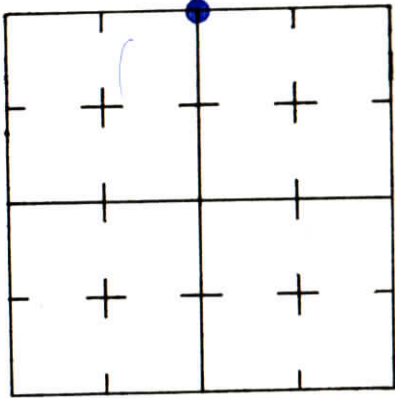


DESCRIPTION: SW CORNER 1/2 SE 1/4

SECTION 35, T. 6 S., R. 9 W.

2nd PRINCIPLE MERIDIAN

INDICATE CORNER REFERENCED



STATE PLANE COORDINATE DATA
INDIANA ZONE: WEST

ESTABLISHED BY:

Y
X

APPROVED BY

DATE

REFERENCED BY:

DATE

DESCRIBE CORNER REFERENCED

